

# GOODSPEED MUSICALS

2010 SEASON

# CARNIVAL!



*Celebrating 20 years of preserving dignity through independence at home.  
Connecticut's Most Trusted Home Care Provider Since 1990.*



## Companions & Homemakers™

*"We know what you're going through"™*

**1-800-348-HOME (4663)**

*Companions  
Live-In or Hourly*

*Homemakers  
Personal Care Service*

Fully Bonded and Insured • All Taxes Paid  
CT DCP HCA 0000101

CompanionsandHomemakers.com • Serving All of Connecticut

# Exceptional Caring...



**Aaron Manor**  
Chester, CT  
860.526.5316

**Greentree Manor**  
Waterford, CT  
860.442.0647

**Bel-Air Manor**  
Newington, CT  
860.666.5689

**Lord Chamberlain**  
Stratford, CT  
203.375.5894

**Cheshire House**  
Waterbury, CT  
203.754.2161

**Mystic Healthcare**  
Mystic, CT  
860.536.6070

Company founders are winners of the CAHCF Lifetime Achievement Award for delivering the highest quality nursing and rehabilitation care.

- Short-Term Rehabilitation
- Wellness Services
- Outpatient Therapy

*Charting Your Course To Health*



Ryders Health Management  
Nursing & Rehabilitation Centers  
[www.rydershealth.com](http://www.rydershealth.com)





Your event is the most important  
that we will ever create.

WEDDINGS   PRIVATE PARTIES   OFF-SITE CATERING   BUSINESS EVENTS



55 Bridge Road | Haddam, CT 06438 | 860.345.4100 | [www.theriverhouse.com](http://www.theriverhouse.com)





# GOODSPEED MUSICALS®

## what's inside

- Carnival!* | 9
- Cast of Characters | 10
- Musical Numbers | 11
- Who's Who | 13
- About the Authors | 18
- Program Notes | 22
- History of the Goodspeed Opera House | 24
- Past Productions | 24
- About Goodspeed Musicals | 25
- William H. Goodspeed Legacy Society | 26
- The Goodspeed Opera House Foundation | 27
- Goodspeed Membership | 28
- Goodspeed Musicals Staff | 35
- For Your Information | 36

Audio and video recording and photography are prohibited in the theatre.

Please turn off your cell phone, beeper, watch alarm or anything else that might make a distracting noise during the performance. Unwrap any candies, cough drops, or mints before the performance begins to avoid disturbing your fellow audience members or the actors on stage. We appreciate your cooperation.

Editor: Lori A. Cartwright



**ADVERTISING**  
 OnStage Publications  
 937-424-0529 | 866-503-1966  
 e-mail: korlowski@jusbiz.com  
[www.onstagepublications.com](http://www.onstagepublications.com)

This program is published in association with OnStage Publications, 1612 Prosser Avenue, Dayton, Ohio 45409. This program may not be reproduced in whole or in part without written permission from the publisher. OnStage Publications is a division of Just Business, Inc. Contents ©2010. All rights reserved. Printed in the U.S.A.

*Experience the Difference*

We offer an Extensive Collection of Fine Jewelry  
Gold • Silver • Platinum



RUSSELL D. CUNNINGHAM  
Designer - Goldsmith

GALLERY HOURS:

Wednesday - Friday 10:00 - 5:00 p.m. Saturday 10:00 - 4:00 p.m.

Exceptional Quality and Service  
Original Designs in Precious Metals  
Custom Work • Fine Diamonds • Gemstones



**DEEP RIVER DESIGN**

381 Main Street • Deep River, Connecticut

860-526-9270

[www.deepriverjewelrydesign.com](http://www.deepriverjewelrydesign.com)

**Join Goodspeed on  
the Social Web**



Follow us on Facebook, Twitter, or YouTube to enjoy production sneak peeks, video, photos, links to exclusive theatre news, and more.

**goodspeed.org**

# ▶ Can you handle the truth?

The truth is most investors' portfolios did not handle the past years' market volatility well. A more alarming truth is that most plans have not been changed to mitigate future risks or capture opportunities.

We have helped many investors with an honest assessment of their current portfolio and plan. May we help you?

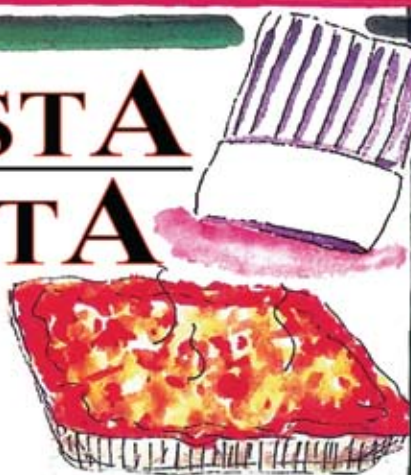
**Robert A. Penney**  
(860) 570-1901  
[bnymellon.com/truth](http://bnymellon.com/truth)

▶ **Who's helping you?**



**BNY MELLON**  
WEALTH MANAGEMENT

# PASTA VITA



*The Place to Go for Gourmet to Go*  
**HOURS:**

Monday-Friday 8-6

Saturday 8-5:30

860-395-1452

[pastavita.com](http://pastavita.com)




*Old Saybrook, CT*



# Experience ESSEX

CONNECTICUT

HISTORIC SEAPORT CHARM. Fine shops, restaurants, cultural attractions, and inns.



a taste for *History*

- Acclaimed Dining
- Award-winning Taproom
- Nightly Entertainment
- Stunning Wine Bar
- Charming Accommodations

NEW - The Griswold Inn Store

THE **GRISWOLD** INN  
SINCE 1776

36 MAIN STREET | ESSEX, CT 06426  
860.767.1776 | GRISWOLDINN.COM

### 3 Great Shops in Essex


**English Accents Antiques**  
Shoreline's largest direct importer of fine antique English furniture.  
*Informal yet elegant*  
4 North Main Street • 860.767.0113  
www.englishaccents-ct.com

**Weltner's Antiques & Art**  
*Nautical and country*  
6 Ferry Street • (860) 767-3987  
pgills@hotmail.com





**LORD NELSON'S ANTIQUES**  
*Maritime antiques*  
One Main Street • Essex, CT 06426  
(860) 767-0257  
Lordnelsonsantiques.com

## DIVE INTO HISTORY


at the Connecticut River Museum



DISCOVER NEW ENGLAND'S GREAT RIVER. 410 MILES OF WATER AND 450 YEARS OF HISTORY.

 <p><b>RIVER CRUISES</b></p> <p>Sail aboard a historic schooner. Seasonal daily cruises and group tours available.</p>	 <p><b>INTERACTIVE EXHIBITS</b></p> <p>Climb aboard the world's first submarine. Experience the 1814 British Raid on Essex.</p>	 <p><b>SPECIAL EVENTS</b></p> <p>Don't miss the annual Burning of the Fleet Day and the Family Maritime Festival.</p>	 <p><b>EDUCATION</b></p> <p>Explore the River with hands-on workshops, school programs, and summer camps.</p>
---	--	--	--

**Connecticut River Museum** | 67 MAIN STREET ESSEX, CT 06426 | 860-767-8269 | www.ctrivermuseum.org




## RIDE AND DINE

Make Any Occasion Special

ESSEX CLIPPER DINNER TRAIN

Located at Essex Steam Train & Riverboat  
800-377-3987 • essexsteamtrain.com

## A Relaxation DESTINATION



*the Spa of Essex*

63 South Main St.  
Essex, CT  
860-767-7796

www.thespaofessex.com

Relaxation ∞ Renewal ∞ Results

visit: [www.EssexCT.com](http://www.EssexCT.com)

Essex photos ©GeorgePerroe.com

# People and technology that the shoreline can count on.

Nearly 40 years ago, the Middlesex Hospital Shoreline Medical Center opened its doors to the community, welcoming area residents with convenience and quality health care services. It's something we are very proud of.

And we are just as proud to support the many programs and events our community offers to area residents. It's a welcome opportunity that makes everyone feel good.

## MIDDLESEX HOSPITAL SHORELINE MEDICAL CENTER

260 Westbrook Road, Essex CT 860-358-3700  
[www.middlesexhospital.org](http://www.middlesexhospital.org)

Healthcare the way you prescribe it.<sup>SM</sup>



# People and technology that the shoreline can count on.

Nearly 40 years ago, the Middlesex Hospital Shoreline Medical Center opened its doors to the community, welcoming area residents with convenience and quality health care services. It's something we are very proud of.

And we are just as proud to support the many programs and events our community offers to area residents. It's a welcome opportunity that makes everyone feel good.

## MIDDLESEX HOSPITAL SHORELINE MEDICAL CENTER

260 Westbrook Road, Essex CT 860-358-3700  
[www.middlesexhospital.org](http://www.middlesexhospital.org)

Healthcare the way you prescribe it.<sup>SM</sup>







# CARNIVAL!

Music and Lyrics by **BOB MERRILL**  
Book by **MICHAEL STEWART**  
Based on Material by **HELEN DEUTSCH**  
With Revisions by **FRANCINE PASCAL**  
with

**MICHELLE BLAKELY JOSHUA DEAN MIQUEL EDSON BEN FRANKLIN LAURENT GIROUX TIMOTHY HUGHES  
KARA KIMMER NATHAN KLAU ROBIN MASELLA MIKE McGOWAN ADAM MONLEY CLIFTON SAMUELS  
AMY SHURE MELISSA STEADMAN JUSTIN URSO PRICE WALDMAN DANA WINKLE LAUREN WORSHAM**

Scenic Design by  
**DAVID P. GORDON**

Costume Design by  
**FABIO TOBLINI**

Lighting Design by  
**JOHN LASITER**

Hair & Wig Design by  
**DAVID H. LAWRENCE**

Sound by  
**JAY HILTON**

Puppet Design &  
Staging by  
**ROBERT SMYTHE**

Magic Consultant  
**MARK KALIN**

Orchestrations by  
**DAN DeLANGE**

Assistant Music Director  
**F. WADE RUSSO**

Production Manager  
**R. GLEN GRUSMARK**

Production Stage Manager  
**BRADLEY G. SPACHMAN**

Casting by  
**STUART HOWARD,  
AMY SCHECTER, & PAUL HARDT**

Associate Producer  
**BOB ALWINE**

Line Producer  
**DONNA LYNN COOPER HILTON**

Music Direction by  
**MICHAEL O'FLAHERTY**

Choreographed by  
**PEGGY HICKEY**

Directed by  
**DARKO TRESNJAK**

Produced for Goodspeed Musicals by  
**MICHAEL P. PRICE**

---

First Performance: July 9, 2010

---

*Goodspeed Musicals is dedicated to the heritage of the musical and the development of new works to add to the repertoire.*

Sponsored by:



# Cast of Characters

*(In order of appearance)*

Grobert **PRICE WALDMAN**  
Schlegel **LAURENT GIROUX**  
Marco **MIKE MCGOWAN**  
Rosalie **MICHELLE BLAKELY**  
Lili **LAUREN WORSHAM**  
Jacquot **NATHAN KLAU**  
Paul **ADAM MONLEY**

## ENSEMBLE

**JOSHUA DEAN**  
**BEN FRANKLIN**  
**TIMOTHY HUGHES**  
**KARA KIMMER**  
**ROBIN MASELLA**  
**CLIFTON SAMUELS**  
**AMY SHURE**  
**JUSTIN URSO**  
**PRICE WALDMAN**  
**DANA WINKLE**

## SWINGS

**MIQUEL EDSON**  
**MELISSA STEADMAN**

## DANCE CAPTAIN

**ROBIN MASELLA**

## AERIAL CHOREOGRAPHER

**JOSHUA DEAN**

## ASSISTANT STAGE MANAGER

**DEREK MICHAEL DiGREGORIO**

## UNDERSTUDIES

Jacquot **PRICE WALDMAN**; Marco **TIMOTHY HUGHES**; Rosalie **DANA WINKLE**;  
Grobert **BEN FRANKLIN**; Lili **MELISSA STEADMAN**; Paul **CLIFTON SAMUELS**

## ORCHESTRA

Conductor/Keyboard I **MICHAEL O'FLAHERTY**; Associate Conductor/Keyboard II **F. WADE RUSSO**;  
Reeds **LIZ BAKER SMITH**; Trumpet **MARK SLATER**; Trombone **DAVID KAYSER**;  
Violin **KARIN FAGERBURG**; Percussion **SAL RANNIELLO**; Harp **SUSAN KNAPP-THOMAS**

## ALTERNATES

Conductor/Keyboard I **F. WADE RUSSO**; Keyboard II **MOLLY STURGES, WILLIAM THOMAS**;  
Reeds **MICHAEL SCHUSTER**; Trumpet **LARRY GIROUX, KEN ROE**; Trombone **SCOTT BEAN**; Violin **DIANE ORSON**;  
Percussion **STEVE COLLINS, DAVE EDRICKS**; Harp **AMANDA EVANS, ANNABELLE TAUBL**

# Musical Numbers

Setting: The South of France, after the Second World War

## Act One

<i>Direct from Vienna</i> .....	Schlegel, Marco, Rosalie & the Ensemble
<i>Very Nice Man</i> .....	Lili
<i>Fairyland</i> .....	Carrot Top
<i>Mira</i> .....	Lili
<i>I've Got to Find a Reason</i> .....	Paul
<i>A Sword &amp; A Rose &amp; A Cape</i> .....	Marco & the Ensemble
<i>Humming</i> .....	Rosalie
<i>Yes, My Heart</i> .....	Lili & the Ensemble
<i>Magic, Magic</i> .....	Marco & Rosalie
<i>Carnival Ballet</i> .....	Schlegel, Lili & the Ensemble
<i>Love Makes the World Go 'Round</i> .....	Lili
<i>Everybody Likes You</i> .....	Paul

## Act Two

<i>Yum Ticky Ticky Tum Tum</i> .....	Lili & the Puppets
<i>We're Rich</i> .....	Lili & the Puppets
<i>Beautiful Candy</i> .....	Lili, the Puppets & the Ensemble
<i>Her Face</i> .....	Paul
<i>Cirque de Paris Ballet</i> .....	Jacquot & the Ensemble
<i>I Hate Him</i> .....	Lili & Paul
<i>Always, Always You</i> .....	Marco & Rosalie
<i>She's My Love</i> .....	Paul

*There will be a 15-minute intermission between acts.*

*Out of respect for our actors and your fellow theatergoers, we ask that you remain seated until the curtain calls are over and the house lights have come up. The use of cameras, cellular phones, or recording devices is not permitted in the theatre. Thank you.*





# **We're proud to support the voices of our community.**

When community members speak about supporting the arts, we respond to their call for making the possible actual. Valuing artistic diversity within our neighborhoods helps to unite communities, creating shared experiences and inspiring excellence.

Bank of America is proud to support Goodspeed for its leadership in creating a successful forum for artistic expression.

Visit us at [bankofamerica.com](http://bankofamerica.com)

©2010 Bank of America Corporation  
SPN-217

**Bank of America** 



## WHO'S WHO



**MICHELLE BLAKELY\*** (*Rosalie*) is happy to return to Goodspeed after 14 long years. Broadway: *Annie Get Your Gun* (standby for Bernadette Peters; Dolly), Original Revival of *Grease* (Patty/Sandy); *Senator Joe* (Dorothy Kenyon). National Tour of *Grand Hotel* (Trude). You may have seen her in some TV and films, and heard her voice-overs, too.



**LAURENT GIROUX\*** (*Schlegel*) *Jesus Christ Superstar* A.D. Tour (Herod), *Annie* 20th Anniversary Tour. (Rooster). Broadway: *Two Gentlemen of Verona*, *Pippin*, *Chicago*, *Dancin'*, and *The Mystery of Edwin Drood*.

This performance is dedicated to his little sister and brother-in-law who met because of *Carnival!*. For more information visit [www.laurentgiroux.com](http://www.laurentgiroux.com).



**NATHAN KLAU\*** (*Jacquot*) A native of West Simsbury, Conn., Nathan is excited to be making his Goodspeed debut! National Tours: *Jersey Boys* (1st National, Vegas, and Australian Companies), *The Lion King*, *Joseph...Dreamcoat*, *Forever Plaid*, and *Anything Goes*. Regional: *Dirty Rotten Scoundrels*, *The Elephant Man*, *Guys and Dolls*, and *Into the Woods*. BA, Yale University. Love to family and friends!



**MIKE MCGOWAN\*** (*Marco*) Broadway: *Ragtime* (Whitman), *Grease* (Vince), *Apple Tree*, *Producers*. NYC: *Bernstein's Mass* (Carnegie Hall), *Thou Swell* (Lincoln Center), *Body Beautiful* (York), *Grey Gardens*, *Ringling Bros.* (Ringmaster). Regional: *Kiss Me Kate* (Petruccio/Fred), *Candide* (Maximilian), *Master Class* (Tony), *Jekyll/Hyde*, *Carl-Magnus*, *Captain Walker*. Television: *Electric Company*, *Delocated*, *Curb Your Enthusiasm*.



**ADAM MONLEY\*** (*Paul*) last appeared at Goodspeed in *The Baker's Wife*. Broadway: *Mamma Mia!* (Original Cast), *South Pacific* (Lincoln Center Benefit). National Tours: *The Phantom of the Opera*, Raoul; Deaf West's *Big River*; Mark Twain/Voice of Huck. Love and thanks to Darko, Robert, Michael, Peggy, and all of the Goodspeed crew. For my family and for Sheila, of course.



**PRICE WALDMAN\*** (*Grobert*) Goodspeed: *Sweeney Todd*, *Amour*, *Caraboo Princess of Javasou*. Broadway: *Lion King*, *Little Mermaid*, *The Grinch*. Off Broadway: *Don Juan*, *All's Well* (TFANA), *Moby Dick* (BAM). Sundance. Encores. Regional: most recently *Take Flight* (McCarter). Lots of Shakespeare, *Christmas Carols*, and new musicals. Best collaboration: Jasper, Sylvia, and Grace with my patient, understanding wife Rebecca.



**LAUREN WORSHAM\*** (*Lili*) NY/Tours: *Cunegonde*, *Candide* (NYCO); *Olive*, *Spelling Bee* (1<sup>st</sup> National). Workshops/readings: *Picnic at Hanging Rock* (O'Neill Theater Center), *Mirror, Mirror* (Playwrights Horizons). Regional includes: *Cinderella*, *Into the Woods* (KC Rep); *Sophie*, *Master Class* (Paper Mill); *Clara*, *The Light in the Piazza* (Weston). 2<sup>nd</sup> place 2009 Lotte Lenya. Co-founder: The Coterie. Love to Kyle and Family.



**JOSHUA DEAN\*** (*Ensemble*, *Aerial Choreographer*) is jubilant to be a part of *Carnival!*, and many thanks to Darko and Peggy for bringing him aboard. He is a proud AEA member, and a founding member of NYC's aerial circus theater company Suspended Cirque. [www.aerialjosh.com](http://www.aerialjosh.com) for more information.

\*Member of Actors' Equity Association, the Union of Professional Actors and Stage Managers in the United States.



# WHO'S WHO



**BEN FRANKLIN\*** (*Ensemble*) Credits include 50<sup>th</sup> Anniversary Tribute of *The Music Man* starring Shirley Jones, *My Fair Lady* with Kelsey Grammer, *Beauty & The Beast* (Lumiere), *The Wizard of Oz*

(Scarecrow), *Oklahoma* (Will Parker), and the film of *The Producers*. Founding member of the aerial theatre circus company Suspended Cirque. An enormous thank you to Peggy and Darko! [www.suspendedcirque.com](http://www.suspendedcirque.com).



**CLIFTON SAMUELS\*** (*Ensemble*) Goodspeed debut!! Recently: Kennedy Center's Spring Gala (Chor. Josh Price). Tours/NY: 1<sup>st</sup> Nat'l Original Revival *A Chorus Line* (Zach, Greg, Al, Don cover),

*Radio City Christmas Spectacular*, *Urban Cowboy* (1<sup>st</sup> Nat'l/Gateway Playhouse). AEA, OCU, BTP for life!!! Thanks: Paul Hardt and MSA. Love: GOD, family, friends, Regina, and R2.



**TIMOTHY HUGHES\*** (*Ensemble*) is honored to be making his Goodspeed debut! Recently seen in the National Tour of *Chitty Chitty Bang Bang*. Other credits include work at Alabama Shakespeare

Festival, Arkansas Rep, New Orleans Opera, and Geva Theater. Proud graduate of NYU and the CAP21 program. Abundant love and thanks to his family. For Dad.



**AMY SHURE\*** (*Ensemble*) is beyond thrilled to be here at Goodspeed! Favorites: Minnie Fay in *Hello, Dolly!* (TUTS starring Leslie Uggams, Ogunquit Playhouse starring Sally Struthers, Arkansas Rep); *Barnum* (Asolo Rep, Maltz Jupiter); *The Mikado* (NYCO); *Swing!* (MSMT, Ogunquit); Rumpoleteazer in *Cats*; Pittsburgh CLO; KC Starlight; Atlanta TOTS; "30 Rock," "Law & Order." [www.amyrebeccashure.com](http://www.amyrebeccashure.com)



**KARA KIMMER\*** (*Ensemble*) is honored to be back on the Goodspeed stage where she recently played Vibrata in *A Funny Thing...Forum*. Credits include *Fame* (u/s Carmen) *Beehive* (Janis

Joplin), *Pirates of Penzance*, and former NBA Detroit Pistons Cheerleader. Kara would like to thank her hometown of Durand, Michigan.



**JUSTIN URSO\*** (*Ensemble*) is very excited to be working on *Carnival!* at Goodspeed. Justin received his musical theatre training at the University of Michigan and has been dancing with Ben Stevenson's

Texas Ballet Theater in Fort Worth/Dallas, Texas. Many thanks to his wonderful friends, family, and Cub. This one's for Sally!



**ROBIN MASELLA\*** (*Ensemble*, *Dance Captain*) is thrilled to make her Goodspeed debut. Credits: *Thoroughly Modern Millie*, *Guys and Dolls*, *Seven Brides for Seven Brothers* (Sacramento Music Circus);

*Candide* (NYCO, Lincoln Center); *Carmen* (Opera NJ & Carolina); *Ticket to Ride* (Shubert Theater); *Little House on the Prairie* (Reading & Workshop). Love and thanks to Dad, Mom, and Benji.



**DANA WINKLE\*** (*Ensemble*) Very happy to be back! Goodspeed: *Mack and Mabel* (u/s Mabel), *Pippin* (u/s Catherine). Tours: *Pippin*; *42<sup>nd</sup> Street*; *Jesus Christ Superstar*; *Chicago*; *Hello, Dolly!*; *Radio City*.

Regional: North Shore, TUTS, Casa Manana, NCT, KC Starlight, Gateway, Westchester, Fireside. BFA: NYU/TSOA. Love to family and my amazing husband, Brian Ogilvie. [www.danawinkle.com](http://www.danawinkle.com)

\*Member of Actors' Equity Association, the Union of Professional Actors and Stage Managers in the United States.





## WHO'S WHO



**MIQUEL EDSON** (*Swing*) trained at Hollywood High School, The Ailey School, and the DADA. His credits include LA Opera *Aida*, *West Side Story* (Sadler Wells, Olivier Nominated), Metropolitan

Opera *Armida*. Dance Companies: Lula Washington Dance Theater, Jazz Antiqua Dance Ensemble, and Philadanco! (The Philadelphia Dance Company.) Miquel recently toured France and Russia with pop artist Mylene Farmer.



**MELISSA STEADMAN** (*Swing*) Music Theatre of Wichita: *Miss Saigon* (Ellen), *The Drowsy Chaperone* (Janet u/s), *The Producers*, *Camelot*, *Kiss Me Kate*; LTO: *The Who's Tommy*, *The Sound of Music* (Maria

u/s), *Seven Brides for Seven Brothers* (Martha), *Swing!*. From Austin, TX and a proud OU graduate. Gratitude to Mom and Dad; love and prayers always. XOXO.

**MICHAEL P. PRICE** (*Executive Director*) is now in his 42nd year as Executive Director of Goodspeed Musicals. Under his direction Goodspeed became known for its dedication to the American musical and the development of new works of this genre. He accepted two special Antoinette Perry (Tony) Awards for Goodspeed. He is chairman of the Connecticut Commission of Culture and Tourism. Mr. Price is a founding member and past vice president of the National Alliance for Musical Theatre. He is the founder of the League of Historic Theatres and served as its first president. He is the vice president of the American Theatre Wing and is a member of the Tony Awards Management Committee. He earned a BA from Michigan State, an MA from Minnesota University, and an MFA from Yale. Michael is the recipient of honorary doctorates in fine arts, *honoris causa*, from Connecticut College and the University of Hartford.

**BOB ALWINE** (*Associate Producer*) joined the Goodspeed producing team in 2002. He established

the Goodspeed National Touring initiative featuring productions of *Pippin* and *The Boy Friend* directed by Julie Andrews. Previously, he worked as the Associate Managing Director of The Old Globe in San Diego, CA, and the Director of Programming for The Ordway Center in St. Paul, MN. Bob holds an MFA in theater management and producing from Columbia University and was a recipient of an NEA Award in musical theater producing.

**DONNA LYNN COOPER HILTON** (*Line Producer*)

has worked on nearly 70 Goodspeed productions since 1988 and, most recently, was honored to guide Goodspeed's development of the new musical *Band Geeks!*, produced this spring at The Norma Terris Theatre. She serves on the Board of the National Alliance for Musical Theatre and is currently co-chair of NAMT's New Works Festival. A native of North Carolina and a graduate of East Carolina University, Donna Lynn and her husband, Goodspeed Lighting & Sound Supervisor Jay Hilton, make their home in East Haddam with Jack.

**DARKO TRESNJAK** (*Director*) directed *A Little*

*Night Music* and *Amour* for Goodspeed Musicals. He has directed at the Oregon Shakespeare Festival, The Old Globe, Los Angeles Opera, Theater for a New Audience, Royal Shakespeare Company Complete Works Festival, Chicago Shakespeare Theatre, The Huntington Theatre Company, The Joseph Papp Public Theatre, Westport Country Playhouse, Sarasota Opera, Opera Theater of Saint Louis, Long Wharf Theater, Florida Grand Opera, Vineyard Theatre Company, Virginia Opera, and Williamstown Theatre Festival. He has received San Diego Theatre Critics Circle Awards for his productions of *Cyrano*, *Pericles*, *The Winter's Tale*, and for Excellence in Artistic Direction.

**PEGGY HICKEY** (*Choreographer*) is pleased to

return to Goodspeed where she received the Connecticut Critics' Circle Award for Outstanding Choreography for *Brigadoon* and *On the Twentieth Century*. Also for Goodspeed: *King of Hearts*, *A Little Night Music*, *Amour*. Recent credits include

\*Member of Actors' Equity Association, the Union of Professional Actors and Stage Managers in the United States.



## WHO'S WHO

*My Fair Lady* with Kelsey Grammer, Kelli O'Hara and Brian Dennehy, and *The Most Happy Fella* for New York City Opera. Peggy won an MTV Award for Beck's *New Pollution* and choreographed *The Brady Bunch Movie*. [www.peggyhickey.com](http://www.peggyhickey.com)

**MICHAEL O'FLAHERTY** (*Music Director*) is in his 19th season as Goodspeed's Resident Music Director. Broadway: *By Jeeves*, *Gentlemen Prefer Blondes*, *A Streetcar Named Desire*. Also: Paper Mill Playhouse, North Shore Music Theatre, Playwrights Horizons, Ford's Theatre, The Brooklyn Academy of Music, The Kennedy Center, Pittsburgh Public Theatre, and the Smithsonian Institution. Musical Supervisor and Cabaret Director of the Williamstown Theatre Festival for 11 years. His original musical, *Genesis*, for which he wrote music and lyrics, was recently showcased in NYC.

**DAVID P. GORDON** (*Set Design*) Goodspeed: *A Little Night Music*, *Amour*. New York: *All's Well That Ends Well*, *Happy Days*, *The Two Noble Kinsmen*, *String Fever*, *Hotel Universe*, *Princess Turandot*. Regional: Old Globe, Huntington, Long Wharf, Chicago Shakespeare, Williamstown, Westport, Wilma, Arden, McCarter, Walnut St., Delaware Theatre Co., Two River Theatre, Kennedy Center. Opera: L.A. Opera, Opera Theatre of St. Louis, Juilliard, Arizona, Sarasota, and Berkshire Opera Companies, Lincoln Center. Awards: three Barrymore Awards, 2003 Elliot Norton Award. Faculty: Rutgers University, Mason Gross School of the Arts.

**FABIO TOBLINI** (*Costume Design*) Off Broadway original productions: *Hedwig and the Angry Inch*, *Batboy: The Musical*. National Tours: *Godspell*, *Fame*, *Jesus Christ Superstar*. Regional: Old Globe Theatre, American Players Theatre, Alley Theatre, Guthrie Theatre, Shakespeare Theatre Company, Ford's Theatre, Long Wharf Theatre, Minneapolis Children's Theatre Company, Universal Studios Hollywood. Opera: Landestheater (Austria), Portland Opera, Nationale Reisopera (Holland), Wexford Opera Festival (Ireland). Ballet: Dominic Walsh Dance Theatre, Ballet Arizona. Awards: 2008 Irene Sharaff Young Master Award, 2001 Lucille Lortel nomination. Portfolio at [www.fabiotoblini.com](http://www.fabiotoblini.com).

**JOHN LASITER** (*Light Design*) Goodspeed: *Annie Get Your Gun*, *Camelot*, *Big River*, *1776*. John Lasiter has designed lighting at numerous regional theaters as well as Off-Broadway. He has also designed the lighting for opera, modern dance, and ballet throughout the US and Europe. His portfolio can be viewed at: [www.johnlasiter.com](http://www.johnlasiter.com).

**DAVID H. LAWRENCE** (*Hair & Wig Design*) David's work has been seen all over the world. With 37 Broadway shows and many regional theater productions under his belt, it is always a pleasure for David to come back to Goodspeed. Last season he was the costume designer for *42<sup>nd</sup> Street*. This theater is one of those places that help shape his love for the theater. Many thanks, Ann Hould Ward, Paul Huntley, and all who work so hard backstage nightly.

**JAY HILTON** (*Sound Design*) is proud to be in his 26<sup>th</sup> season with Goodspeed. Since 1985 he has designed countless productions at the Opera House and Goodspeed's Norma Terris Theatre in Chester. Jay's sound effects have been heard on Broadway, National Tours, and at regional theatres from coast to coast. Jay and his wife, Goodspeed's Line Producer Donna Lynn Hilton, make their home (and garden) in East Haddam.

**ROBERT SMYTHE** (*Puppet Design & Staging*), the founder of Philadelphia's Mum Puppettheatre, America's only regional theater dedicated to puppetry, is one of the foremost puppet artists in the United States. He has won numerous awards and honors, including Guggenheim and Pew Fellowships, four Barrymore awards, and three Citations for Excellence in the Art of Puppetry from *Union Internationale de la Marionnette*. His original work has been performed on four continents, including a month-long tour of Japan featuring Darko Tresnjak.

**MARK KALIN** (*Magic Consultant*) is recognized as one of the most influential and creative forces in the magic industry. Along with partner Jinger, he was voted magic's highest honor, Magician of the Year, by the prestigious Academy

*\*Member of Actors' Equity Association, the Union of Professional Actors and Stage Managers in the United States.*



## WHO'S WHO

of Magical Arts. "Kalin & Jinger" have made numerous television appearances including NBC's "World's Greatest Magicians," "Hidden Secrets of Magic," Fox Family's "Magic on the Edge," as well as appearances on "Entertainment Tonight," CBS, and ABC.

**DAN DeLANGE** (*Orchestrator*) has scored music for Paul Williams, Julie Andrews, Rosie O'Donnell, Jerry Herman, Harvey Schmitt, Peter Link, and the Jim Henson Company. He orchestrated the premiere of Charles Strouse's *You Never Know*, conducted the Broadway National Tour of *Chicago*, and was music director/conductor for Musical America's National Tours of *Crazy for You*, *Beauty and the Beast*, and *Singin' in the Rain*. Graduate of Interlochen Arts Academy and Oberlin Conservatory of Music. DanDeLangeOrchestrations.com

**F. WADE RUSSO** (*Assistant Music Director*) Goodspeed: 17+ productions, *The Boy Friend* National Tour. Broadway: *By Jeeves* (assistant conductor, original cast recording conductor). Most recent: director/conductor *Strike Up the Band*, Boston Conservatory. Regional: Pittsburgh Public, Huntington, Repertory Theatre of St. Louis, Barrington Stage, Lyric Theatre of Boston, Gateway Playhouse, Shakespeare Theatre of New Jersey, Long Wharf, Weston Playhouse, Juilliard Repertory, Williamstown Theatre Festival, Boston Conservatory. Faculty: O'Neill Theatre Center, Circle in the Square Theatre School, Emerson College, Juilliard School, Boston Conservatory. Special thanks to M'OF and Steven.

**STUART HOWARD, AMY SCHECTER, & PAUL HARDT** (*Casting*) have cast hundreds of shows over the past 25 years in the USA, Canada, and Great Britain. Among their favorites—*Gypsy* (Tyne Daly), *Chicago* (Bebe Neuwirth, Ann Reinking), original *La Cage aux Folles*; Off Broadway: *I Love You, You're Perfect, Now Change*; *The Normal Heart*. Currently on Broadway: Twyla Tharp's *Come Fly Away* and *West Side Story*. Coming up: *The Nutty Professor* directed by Jerry Lewis. They are very pleased to be casting for Goodspeed again.

**R. GLEN GRUSMARK** (*Production Manager*) is a graduate of North Carolina School of the Arts, where he earned a scholarship for artistic excellence and a B.F.A. in technical production. In addition to Goodspeed's two stages, Glen has overseen technical management of two Goodspeed National Tours, Goodspeed's *By Jeeves!* on Broadway, as well as transfers, construction, and installation work on Goodspeed's behalf, including Variety Arts Theatre (NYC), New World Stages (NYC), and The Ford's Theatre (DC). Glen is celebrating his 19<sup>th</sup> season with the Goodspeed team.

**BRADLEY G. SPACHMAN\*** (*Production Stage Manager*) is celebrating his 16th season with Goodspeed Musicals! Originally from Chicago, he has worked at the Goodman and Lookingglass theatres. In Connecticut, he has stage managed at Yale Rep and the Connecticut Repertory theatres. He brought Goodspeed's productions of *Pippin* and *The Boy Friend* to audiences across North America. At The Norma Terris Theatre he stage managed *Lizzie Borden*, *The Baker's Wife*, and *O. Henry's Lovers*. Some of his favorite Goodspeed productions include *Redhead*, *King of Hearts*, and *George M!*

**DEREK MICHAEL DiGREGORIO\*** (*Assistant Stage Manager*) is thrilled to be back at Goodspeed this season. Past productions here include *Pippin*, *1776*, *Happy Days*, *Half a Sixpence*, *Big River*, *Jim Henson's Emmet Otter*, *42<sup>nd</sup> Street*, *Camelot*, *A Funny Thing...Forum* and *Annie Get Your Gun*. New York credits include *Applause* at Encores!. Other regional credits include *Black Snow*, *Safe in Hell*, and *Comedy on the Bridge/Brundibar* (Yale Rep). BA from Salem State College; MFA from Yale School of Drama. Proud member of AEA.

**ACTORS' EQUITY ASSOCIATION**, founded in 1913, represents more than 45,000 actors and stage managers in the US. Equity negotiates wages and working conditions, providing a wide range of benefits, including health and pension plans. Equity seeks to foster the art of live theater as an essential component of our society.

\*Member of Actors' Equity Association, the Union of Professional Actors and Stage Managers in the United States.



## ABOUT THE AUTHORS

**BOB MERRILL** 1921-1998 (*Music & Lyrics*) collaborated with Joseph Stein and Robert Russell in 1959 on the musical *Take Me Along*, based on Eugene O'Neill's play *Ah, Wilderness!*, which was revived by Goodspeed in their 1984 season and transferred to the Shubert in New Haven, the Kennedy Center in Washington, and on to Broadway. He was the lyricist and Jule Styne the composer for *Sugar* with Robert Morse *Funny Girl* with Barbara Streisand. Mr. Merrill composed the music for the films *Mahogany*, *W.C. Fields and Me*, and *Chu Chu and the Philly Flash*. He collaborated with Jule Styne for the TV specials "The Wonderful Christmas of Red Riding Hood" with Liza Minnelli and "Mister Magoo's Christmas Carol." His songs include "How Much Is That Doggy in the Window?" and "If I Knew You Were Comin' I'd Have Baked a Cake." He spent seven years as dialogue director and director of Columbia Pictures and was supervisor of writers for NBC National Radio.

**MICHAEL STEWART** 1929-1987 (*Book*) scored on Broadway the first time out when he won a Tony Award for his *Bye Bye Birdie* libretto. Subsequently he was the librettist for *Carnival!* for which he won the Drama Critics Circle Award and *Hello, Dolly!* which won him both the Tony and the Drama Critics prizes. He also wrote the book for *George M!*, *Mack and Mabel*, and *The Grande Tour*, book and lyrics for *I Love My Wife*, lyrics for *Barnum*, and collaborated with Mark Bramble on the book for *42<sup>nd</sup> Street* and the Jule Styne musical *Treasure Island*. In 1984 he collaborated as author with composer Max Showalter and lyricist Peter Walker on the new musical *Harrigan*

*'n' Hart* which premiered at The Norma Terris Theatre and subsequently moved on to Broadway.

**HELEN DEUTSCH** 1906-1992 (*Material*) was a screenwriter, journalist and songwriter. She wrote theatre reviews for the New York Herald and the New York Times as well as working in the press department of the Theatre Guild. She wrote the screenplays of *The Seventh Cross* starring Elizabeth Taylor; *Golden Earrings*; *The Love of Carmen*; *Shockproof*; *Kings Solomon's Mines*; *Kim*; *It's a Big Country*; *Plymouth Adventure*; *Lili*; *Flame and Flesh*; *The Glass Slipper*; *I'll Cry Tomorrow*; *Forever, Darling*; and *The Unsinkable Molly Brown*. Her last screenplay was *Valley of the Dolls*. As part of her work for *Lili*, Deutsch wrote the lyric of the song "Hi-Lili, Hi-Lo," which has been a popular bittersweet ballad for cabaret singers ever since. Deutsch's libretto for *Carnival!* was nominated for two Tony awards. Deutsch was nominated for the Academy Award for the screenplay of *Lili*, which also won her a Golden Globe Award.

**FRANCINE PASCAL** (*Book Adapter*) collaborated with her brother Michael Stewart on the Broadway musical *George M!*. She is the creator of the *Sweet Valley High* book series which will be produced as a feature film by Marc Platt Productions and Universal. She is also the author of *La Villa* and a new adult novel *Sweet Valley Confidential-Ten Years Later*, to be published in 2011 by St. Martin's Press. She worked on the revision of *Mack & Mabel* which played at the Goodspeed Opera House in 2004 and the Criterion in London in 2006, and the revision of *Carnival!* at the Kennedy Center in 2007.



# GOODSPEED MUSICALS®

*Gratefully Acknowledges the Following  
Supporters for 2010*

## **CORPORATE SUPPORT**

ASCAP  
Amica Insurance  
Bank of America  
COMCAST  
Connecticut Light & Power Company  
Essex Savings Bank  
Hoffman Audi  
The Inn at Middletown  
Liberty Bank  
Mohegan Sun  
Robinson & Cole LLP  
The Safety Zone  
Sennheiser Electronic Corporation  
Shops at Mohegan Sun  
The Shubert Organization, Inc.  
Updike, Kelly & Spellacy, P.C.  
Webster Bank  
WSHU Public Radio Group  
WTNH News Channel 8

## **FOUNDATION SUPPORT**

Anonymous (2)  
Acorn Alcinda Foundation, Inc.  
The Adolph and Ruth Schnurmacher Foundation, Inc.  
The Aeroflex Foundation  
Aldo DeDominicis Foundation  
The ASCAP Foundation - Irving Caesar Trust  
The Christine E. Moser Foundation  
Daphne Seybolt Culpeper Memorial Foundation  
The George A. & Grace L. Long Foundation  
The Max Showalter Foundation  
NewAlliance Foundation  
Newman's Own Foundation  
The Noel Coward Foundation  
Public Welfare Foundation  
The Rodgers and Hammerstein Foundation  
The Samuel and Rebecca Kardon Foundation  
SBM Charitable Foundation, Inc.  
The Shubert Foundation, Inc.  
The Wachovia Wells Fargo Foundation

## **GOVERNMENT SUPPORT**

With Support from the  
Connecticut Commission  
on Culture & Tourism  
National Endowment for the Arts



## **SPECIAL THANKS TO**

Duncan Edwards of Audio Design International,  
a division of ADI Group  
Bella Rosa International, Inc.  
DJ Corchin, The phazelFOZ Company, LLC  
Cross Island Ferry Services, Inc.  
HMS Media, Inc.  
Leros Point to Point, Inc.  
The Penguin Group  
The Piano & Organ Warehouse

## **CAPITAL CAMPAIGN SUPPORT**

Anonymous (1)  
Mr. and Mrs. Francis G. Adams, Jr.  
The Aeroflex Foundation  
Mr. and Mrs. John E. Avery, Jr.  
David W. Bogan and Heather Hunt  
Bob Boyett  
Sally and Ted Carrier  
Connecticut Department of Economic &  
Community Development  
Mrs. J. Noyes Crary  
Alvin Deutsch  
Dr. and Mrs. David F. Frankel  
Samuel S. Fuller  
Sondra Gilman and Celso Gonzalez-Falla  
John and Joanna Hamby  
Nancy and Jeffrey Hoffman  
Betty Ruth and Milton Hollander  
The Kitchings Family  
Mr. and Mrs. Charles R. Lindberg  
Mark Masselli and Jennifer Alexander  
Andrew and Bonnie Lee McKirdy  
Jane Anne Miller  
Mrs. Peter E. Paris  
Michael and Jo-Ann Price  
Dr. Anne L. Rothstein and Ms. Jane Hellman  
Peter and Betsy Russell  
Mr. and Mrs. Henry S. Scherer, Jr.  
Richard and Mary Schneller  
Mr. and Mrs. Benjamin Sevitch  
Ted and Vada Stanley  
Carl and Jessica Thompson  
Mr. and Mrs. Angelo Tomasso, Jr.  
Dr. Joan E. Venditto  
Lucille and Dave Viola, Sr.  
Mark Wainger and Charles Taylor  
The Zachs Family

# For food, fashion & fun—

The best locally grown food cooked from scratch. Join us at our neighborhood restaurant or down at the farm with our popular series of benefit farm dinners.



**RIVER  
TAVERN**

**DINNERS  
AT THE  
FARM**

23 Main Street

[RiverTavernRestaurant.com](http://RiverTavernRestaurant.com)

860.526.9417

# You'll find us in Chester!

Offering a Contemporary French-inspired tasting menu in the dining room and The French 75 Bar menu at our marble-topped bar.



**Restaurant L&E  
and the French 75 Bar**

59 Main Street

[RestaurantLAndE.com](http://RestaurantLAndE.com)

860.526.5301

Comfort, practicality and versatility are the hallmarks of Jan Cummings' personal taste, with the exception of her outrageous Paris hats and some overly high heels.



UNPARALLELED APPAREL  
**C&G**  
SEASONAL AND TIMELESS

3 North Main Street

[CGChester.com](http://CGChester.com)

860.526.3284

New, vintage and antique jewelry, beads, buttons, textiles, costume wear, masks, and world artifacts. Custom design, jewelry repair & classes by owner, Kathryn Wright.



**Hammered Edge Studio & Gallery**

14 Main Street

[HammeredEdge.com](http://HammeredEdge.com)

860.526.1654





## PROGRAM NOTES

### “*Carnival!* - A Fairy Tale for Everyone!”

The origins of *Carnival!* can be traced to the classic television puppet show “Kukla, Fran and Ollie.” Burr Tillstrom manipulated a total of twelve puppets for a live and unscripted puppet show with Fran Allison as the only visible human cast member. Allison, a former teacher, had an uncanny rapport with the puppets and together they captivated audiences of all ages. The program was extremely popular and was enjoyed by more adults than children. “Kukla, Fran and Ollie” was widely regarded as the first children’s show to strongly appeal to an older demographic. The show had a continuous run from 1947 to 1957 and Jim Henson declared, as he was inducted into the Radio and Television Hall of Fame, “*We all owe everything to Burr Tillstrom and Kukla, Fran and Ollie.*”

On October 28, 1950, *The Saturday Evening Post* ran a short story by Paul Gallico entitled “The Man Who Hated People” that was inspired by “Kukla, Fran and Ollie.” It was about a successful television program called “The Peter and Panda Show.” The story follows Milly Maynard, a young woman hired to appear on the program. Her role is to be herself and engage in extemporaneous repartee with a number of puppets. Behind the scenes, Crake Villeridge, a misanthropic puppeteer who manipulates all the puppets, scolds her for the slightest error and drives her to consider leaving the program. He is also in love with Milly and uses the puppets to show her different aspects of his personality. Crake is ashamed of his physical appearance, but he says to Milly about himself: “If you could be made to love all of the things he really was, you would never again recoil from the things he seemed to be.”

Milly does come to love Crake and she resolves that, “Her lot lay with the enchanted Never-Never Land of the mind, its children who had come to be a part of herself, and the man who was the creator and father to them all.”



Jerry Orbach and Anna Maria Alberghetti in the original Broadway production of *Carnival!*, 1961

The story received mixed reviews; however, Gallico used the basic premise of “The Man Who Hated People” to write the highly acclaimed novella *Love of Seven Dolls*. Gallico dedicated the book to Burr Tillstrom and Fran Allison of the “Kukla, Fran and Ollie” show. He also invited Burr, Kukla, and Ollie to be in *Lili*, the movie version of the yet-to-be-published *Love of Seven Dolls* with Leslie Caron. However, they declined the offer and the movie went through production with different cast members.

There are some similarities between the book and the movie, although major differences abound. The book is somber in tone, while Helen Deutsch’s screen interpretation is uplifting and heartwarming romantic. It is a film that has been enjoyed by people of all ages and *Carnival!* is based on the screen adaptation.



## PROGRAM NOTES

In *Love of Seven Dolls*, Gallico introduced the idea of a young woman joining a carnival, not a television program. This plot device is implemented in *Lili* and later in *Carnival!*. *Lili* went on to become an award-winning and phenomenally successful film. This caught the eye of producer David Merrick, who subsequently proposed a stage adaptation of the movie.

In 1958 Merrick commissioned screenwriter Helen Deutsch to draft a plot outline based on the screenplay of *Lili*. Deutsch suggested Bob Merrill write music and lyrics for the musical and Merrick agreed. Next, director and choreographer Gower Champion became involved after falling in love with Merrill's music for the show. Champion's vision required the exclusion of conventional scene changes and curtains. This concept pervaded every aspect of the show and brought a greater sense of cohesion to the piece. Champion also changed the title of the show from *Carrot Top* to *Carnival!*. Later, Michael Stewart completed the first draft of the book with Deutsch. Meanwhile, Bob Merrill was being pressured to write a hit

song for the show. Then, in a moment of frustration, he remarkably improvised "Love Makes the World Go 'Round."

After an exhaustive casting process, *Carnival!* went into production from January 9 to March 5, 1961. After out of town tryouts, *Carnival!* opened on Broadway at the Imperial Theatre on April 31, 1961 and ran for 719 performances. Even before the Broadway opening, rumors abounded that Merrick had a hit. Word had spread that the show benefited from first-rate direction, creative staging, an excellent score, and a fine cast. The critics lavished praise on the production, hailing it a "gentle blockbuster," "ebullient rough-and-tumble merriment," "restores wonder to theatre," and "captures the quality of magic." Many of the traditional elements found in fairy tales are reflected in *Carnival!*. Although, unlike most stories within that genre, adults are drawn to the characters in the musical as well! We are pleased to bring you a classic production that will ensure an enchanted and uplifting evening for the whole family.

**THE LESS ART  
KIDS GET, THE  
MORE IT SHOWS.**

**ART**  
**ASK FOR MORE.**



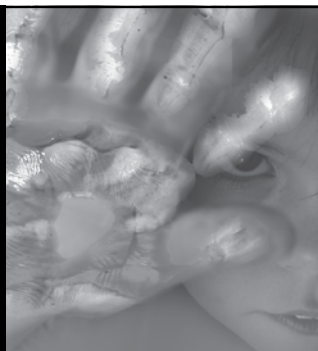
GET INVOLVED

[www.americansforthearts.org/public\\_awareness](http://www.americansforthearts.org/public_awareness)

### Did You Know?

Young people who participate in the arts for at least three hours on three days each week through at least one full year are:

- **4 times** more likely to be recognized for academic achievement
- **3 times** more likely to be elected to class office within their schools
- **4 times** more likely to participate in a math and science fair
- **3 times** more likely to win an award for school attendance
- **4 times** more likely to win an award for writing an essay or poem





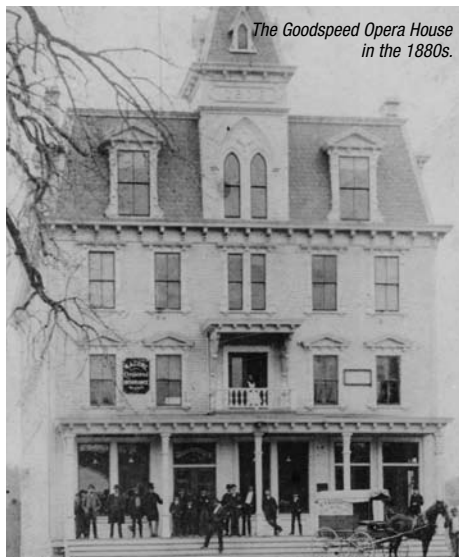
# HISTORY OF THE GOODSPEED OPERA HOUSE

The Goodspeed Opera House has endured as a majestic presence on the Connecticut River since it was built in 1876 by William H. Goodspeed, a shipping and banking magnate and avid theatre lover. Since that time the Opera House has lived two lives: the first as a bustling center of commerce, housing a theatre, professional offices, steamboat passenger terminal and a general store; and the second, after a period of neglect and deterioration, as a magnificent professional musical theatre fully restored in 1963 to its original splendor.

Goodspeed's history goes back to its opening night on October 24, 1877, when a repertory group presented the comedy *Charles II* and the farces *Box and Cox* and *Turn Him Out*. Featured performers of the day were brought to East Haddam by steamboat, many directly from theatre in New York.

After William Goodspeed's death, the theatre was eventually sold and used as a storage depot for the State Highway Department. The building was marked for demolition in 1958, but local preservationists became interested and in 1959 The Goodspeed Opera House Foundation was organized to restore and reactivate the theatre. With the cooperation of the State of Connecticut and the support of donor-members, the Goodspeed Opera

House was restored and rededicated on June 18, 1963, with the opening of the musical *Oh Lady! Lady!!*



*The Goodspeed Opera House in the 1880s.*

## PAST GOODSPEED PRODUCTIONS

2002

Dames at Sea  
Babes in Arms  
King of Hearts  
\*Actor, Lawyer, Indian Chief  
\*The Road to Hollywood  
\*The Baker's Wife

2003

Me and My Girl  
Very Good Eddie  
A Tree Grows in Brooklyn  
\*Stand By Your Man: The Tammy Wynette Story  
\*Camille Claudel  
\*O. Henry's Lovers

2004

Call Me Madam  
Where's Charley?  
Mack & Mabel  
°All Shook Up  
\*Princesses

2005

Seven Brides for Seven Brothers  
The Boy Friend  
Abyssinia  
\*Flight of the Lawnchair Man  
\*Amour  
\*The Girl in the Frame

2006

Li'l Abner  
Pippin  
Pirates of Penzance  
\*The 60's Project  
\*Meet John Doe  
\*Caraboo, Princess of Java

2007

Singin' in the Rain  
High Button Shoes  
1776  
\*Happy Days

2008

Happy Days  
Half a Sixpence  
Big River  
\*Emmet Otter's Jug-Band Christmas  
°13  
°The Story of My Life

2009

42<sup>nd</sup> Street  
Camelot  
A Funny Thing Happened on the Way to the Forum  
\*Lucky Guy  
Jim Henson's Emmet Otter

2010

Annie Get Your Gun  
\*Band Geeks!

For a complete list of Goodspeed Musicals' past productions from 1963 to the present, please visit our website at [www.goodspeed.org/shows\\_past.aspx](http://www.goodspeed.org/shows_past.aspx)

° Went on to Broadway    + Produced at The Norma Terris Theatre    \*World Premiere



## ABOUT GOODSPEED MUSICALS



Kevin Earley and Jenn Gambatose  
in *Annie Get Your Gun*, 2010  
Photo by Diane Sobolewski

Goodspeed Musicals was first formed as The Goodspeed Opera House Foundation in 1959 to restore the 19<sup>th</sup> century Goodspeed Opera House as a professional theatre. Under the direction of Michael P. Price since 1968, Goodspeed has achieved acclaim as the home of musical theatre. Mixing classics by the Gershwins, Cole Porter, and Jerome Kern with the very best of this country's newest musicals, such as *Annie*, *Man of La Mancha*, and *Shenandoah*, Goodspeed pioneered the practice of rethinking, restoring, and revitalizing America's musical theatre heritage.

### Goodspeed Opera House

Dedicated to the preservation and advancement of musical theatre, Goodspeed produces three musicals April through December on its mainstage in East Haddam. Nineteen Goodspeed productions have gone on to Broadway, receiving more than a dozen Tony Awards. Goodspeed itself has been awarded two Special Tony Awards, one in 1980 for outstanding contributions to the American musical and a second in 1995 for distinguished achievement for a regional theatre.

Located in rural East Haddam on the Connecticut River, the historic Victorian-style Opera House takes musicals from the past and brings them to life for today's audiences.

### New Musicals at The Norma Terris Theatre

Goodspeed is at the forefront of shaping the future of musical theatre. At The Norma Terris Theatre, located in nearby Chester, Goodspeed develops new musicals and nurtures emerging artists. Goodspeed has launched over 50 musicals into the theatre world at The Norma Terris Theatre, giving composers and authors the opportunity to develop their material through actual production. Audience response is a vital part of this theatre. Regular input is actively sought through "Talkback" discussions with the creative staff, giving audiences the opportunity to play a part in creating a new musical.

### The Scherer Library of Musical Theatre

The Scherer Library of Musical Theatre is integral in perpetuating our national musical heritage. The Library preserves scores, sheet music, scripts, original cast recordings, playbills, and theatre memorabilia. In addition to making this collection available for study and research, the library provides the Goodspeed creative staff with original source material to assist in the faithful re-creation of musicals.

### The Max Showalter Center for Education in the Musical Theater

In 2002, Goodspeed Musicals established The Max Showalter Center for Education in the Musical Theater. The Center encourages and nurtures musical theatre artists and students by providing a unique and comprehensive array of training and educational programs to serve both the national and local academic communities. As a part of that mission, the Center conducts the annual Goodspeed Musical Theatre Institute in collaboration with New York University's Tisch School of the Arts and The Hart School at the University of Hartford. In addition, it offers education pages on Goodspeed's website, allowing visitors to further participate in and appreciate the rich and vibrant world of musical theatre. For more information, please call Education Director Joshua S. Ritter at 860.873.8664, ext. 745.



# WILLIAM H. GOODSPEED LEGACY SOCIETY

## *Honoring Those Who Have Made a Commitment to Provide for the Future of Goodspeed Musicals*

By remembering Goodspeed through a planned gift, you can ensure that your legacy of support, so important to our production of highest quality musical theatre, continues for future generations. The William H. Goodspeed Society was created to recognize those who have included a future bequest to Goodspeed in their wills or estate plans.

Anonymous (7)  
Edward and Ruth Cape  
Michael Chaiklin  
Stephen B. Crowley, III  
Richard Goodman  
Norwick R. G. and  
Elizabeth Jane Goodspeed  
Martha D. "Pepper" Hitchcock

Mr. and Mrs. Robert P. Jones  
John Kartovsky  
Ruth Katz  
Dorothy Liepert  
Andrew C. McKirdy  
Leslie and Lynne Nathan  
Jane E. Ondovcsik  
Peter and Janet Otto

Michael and Jo-Ann Price  
Mary Jane Richilson  
Dr. Anne L. Rothstein and  
Ms. Jane Hellman  
Richard and Mary Schneller  
Sheila L. Tomlinson  
Mark and Roberta Velez

### **Goodspeed Musicals Funds and Endowments**

The funds and endowments listed below were established during lifetime, by bequest, or in memoriam with an outright gift to Goodspeed Musicals.

- The Frederick A. and Justine Millspaugh Cattin Family Fund
- The Arthur and Elizabeth Godbout Fund for the Support of the Music Department
- The George S. and Charmian A. Goodspeed Memorial Fund
- The A. Nicholas Groth, Ph.D. Charitable Gift Annuity\*
- The Richard G. and Elizabeth F. Kehoe Charitable Gift Annuity\*
- The Charles R. Lindberg Family Fund
- The Maryann and Jane E. Ondovcsik Fund for the Preservation of the Victorian Goodspeed
- The Salvatore Marzano, Jr. Memorial Student Scholarship Fund
- The Elaine McKirdy Intern/Apprentice Endowment
- The Charlotte and Gerald Sandler Educational Endowment
- The Scherer Library of Musical Theatre Fund
- The Max Showalter Center for Education in the Musical Theater
- The Ashton M. Tenney, Jr. Memorial Annuity Fund\*

*\*The donors receive an income stream during their lives and a named fund or endowment will be created when the annuity reverts to Goodspeed Musicals. For further information on how you can ensure your legacy of support with a Planned Gift to Goodspeed Musicals, please contact Gloria Gorton, Director of Major Gifts, PO Box A, East Haddam, CT 06423, 860.873.8664, ext. 366 or e-mail [gloria.gorton@goodspeed.org](mailto:gloria.gorton@goodspeed.org).*

### **Special Gifts**

*Goodspeed Musicals is grateful to those who have made a special gift during the 2010 season.*

*They include:*

- Suzanne and Donald Joffray
- Benjamin B. Liveten Charitable Grand Nephew Trust
- Carol Sirot

### **Memorial Gifts**

In Memory of Jerome Teitelbaum by JoAnn Schwatzman

*Goodspeed fondly remembers those who left a bequest or in whose honor a memorial fund was established. Their love of musical theatre and our institution is an example to us all.*

- The Milon Barnes Memorial Fund
- Leonard N. Blake
- Fellner Family Foundation
- Albert D. Firestone
- Henry Sage Goodwin Memorial Fund
- The Edith O. Haynes Trust
- Martha C. Hinkel
- Thomas W. Holton Memorial Fund
- The Adrienne I. Koch Revocable Trust
- William J. Kochen Memorial Fund
- The Edward Mills Memorial Fund
- Edith L. Nyman
- Rochelle Richilson
- Barbara V. Ross
- Bertha L. Rottmann
- Martha Shattuck



# THE GOODSPEED OPERA HOUSE FOUNDATION

*The Goodspeed Opera House Foundation, chartered by the State of Connecticut as a charitable, educational, non-profit organization, is charged with the responsibility of maintaining the Goodspeed Opera House both as a historic landmark and as a living theatre. The objective of the Foundation is the establishment and development of a nationally recognized regional theatre of which its members and supporters can be justly proud.*

## 2010 BOARD OF TRUSTEES

Francis G. Adams, Jr.  
John Barlow  
Myron R. Bernstein\*  
David W. Bogan  
Russell Carter  
Theodore S. Chapin  
Kay Knight Clarke  
Alvin Deutsch  
Bruce F. Frankel  
Robert B. Friedman  
Norwick R. G. Goodspeed\*\*  
Helen Gray  
John H. Hamby  
Jeffrey S. Hoffman  
Lynde S. Karin  
John S. Kartovsky\*\*  
Mary Ellen Klinck  
Robert A. Landino  
Mark Masselli  
F. Patrick McFadden, Jr.  
Lawrence McHugh  
Robert Roy Metz\*  
Robert F. Neal  
Eric D. Ort  
Muriel S. Paris  
Michael P. Price  
Susan Scherer  
Richard F. Schneller\*\*  
H. William Shure  
Joseph Smith  
Viola Tagliatela  
DeRoy C. Thomas  
Mark Wainger  
John F. Wolter  
Dona D. Young\*

\*Emeritus Trustee

\*\*Honorary Trustee

## OFFICERS

M. Jodi Rell,  
*Ex Officio Honorary Chairman*  
DeRoy C. Thomas,  
*Chairman of the Board*  
Francis G. Adams, Jr., *President*  
Jeffrey S. Hoffman, *Vice President*  
John Wolter, *First Vice-President*  
Eric D. Ort, *Secretary*  
Mark Masselli, *Treasurer*  
McLaughlin & Stern,  
*General Counsel*

## PAST PRESIDENTS

Marian D. Terry  
Muriel W. Selden +  
Bernard Knollenberg  
Noel M. Davis +  
Hal James  
Beatrice H. Rosenthal+  
Alan C. Davis  
Noel B. Gerson  
John H. Hamby +  
Norwick R. G. Goodspeed +  
Richard F. Schneller +  
Robert F. Neal +  
DeRoy C. Thomas  
*+ also served as Chairman of the Board*

## GOODSPEED COUNSELORS

Richard T. Cersosimo and  
Valerie J. Koif  
Catherine Ladnier and  
J.M. Robinson  
Mr. and Mrs. Charles R. Lindberg  
Andrew and Bonnie Lee McKirdy  
Saul and Hila Rosen  
Dr. Anne L. Rothstein and  
Ms. Jane Hellman  
Chuck and Dianne Ramsey  
Anthony and Chelsea Michaud  
Sandra Anagnostakis  
Carl and Jessica Thompson  
Edgar E. Shirley  
Carol Adams Dahlke  
Lenord H. Suzio

## THE SCHERER LIBRARY OF MUSICAL THEATRE AT GOODSPEED ADVISORY BOARD

Ken Bloom  
Theodore S. Chapin  
Alvin Deutsch  
Brian Drutman  
David Hummel  
Michael A. Kerker  
Robert Kimball  
Bruce Pomohac  
Bill Rosenfield  
Henry S. Scherer, Jr.  
Steven Suskin

## THE MAX SHOWALTER CENTER FOR EDUCATION IN THE MUSICAL THEATER ADVISORY BOARD

Gordon Greenberg  
Robert R. Metz  
Jane Percy  
Peter Walker  
Nancy Wolf

## NEW ACTOR HOUSING CAMPAIGN STEERING COMMITTEE

John Barlow, Chair  
Francis G. Adams, Jr.  
John P. Connolly  
Robert B. Friedman  
Mark Masselli  
Michael P. Price  
Susan Scherer  
David J. Viola, Sr.  
John F. Wolter  
Mark Zimmerman



# GOODSPEED MEMBERSHIP

Did you know that your ticket price covers less than 60% of the actual cost of our performances? You might think of it as getting everything after intermission **FOR FREE**. More accurately-everything in the second half of the production is made possible by the generosity of Goodspeed contributors.

**THANK YOU**, Goodspeed Members! Goodspeed is over 7,000 members strong – for a complete listing, please visit our website at [www.goodspeed.org](http://www.goodspeed.org).

*As of June 2, 2010*

## MARQUEE PARTNERS

### FOUNDING PARTNER (\$25,000+)

Lucille and Dave Viola, Sr.

### INVESTING PARTNERS (\$10,000+)

\*Mr. and Mrs. Francis G. Adams, Jr.

\*Richard T. Cersosimo and Valerie J. Koif

Herb Chambers

Mr. and Mrs. Jerry K. Day

Mr. and Mrs. Gerald Lazar

Michael and Jo-Ann Price

Mr. and Mrs. DeRoy C. Thomas

Dona and Roland Young

### EXECUTIVE PRODUCING PARTNERS

**(\$7,500+)**

Alice Dadourian

Suzanne and Donald Joffray

Dr. Anne L. Rothstein and

Ms. Jane Hellman

Mr. and Mrs. Angelo Tomasso, Jr.

### ARTISTIC AND TECHNICAL

**PRODUCING PARTNERS (\$5,000+)**

Sandra Anagnostakis

Bob Boyett

Alvin Deutsch

Dr. and Mrs. David F. Frankel

Sandy and Bob Friedman

Mrs. Helen Gray

Ruth Lord

Mrs. Robert R. Mathews

Anthony and Chelsea Michaud

\*Regina and Robert F. Neal

Saul and Hila Rosen

Ted and Vada Stanley

Leanne F. Trout

\*Mark Wainger and Charles Taylor

### ASSOCIATE PRODUCING

**PARTNERS (\$2,500+)**

Eric Ort and Duff Ashmead

Charles Beach Barlow

John Barlow and Scott Rudin

Maxwell and Sally Belding

Frank and Amy Campbell

Sally and Ted Carrier

The Christine E. Moser Foundation

\*Kay Knight Clarke and Logan Clarke

Joan Colello

Mr. and Mrs. Walter W. Congdon

Mr. and Mrs. Robert F. Coviello

Bill and Denice Feeley

Robert A. and Nancy J. Franco

Frank Loesser Enterprises

Reginald H. Fullerton, Jr.

William J. Ginnetti, Sr.

The Harry E. Goldfarb Family Foundation

Ron and Karen Goodspeed

Mr. and Mrs. Norwick R. G. Goodspeed

Gordon D. Gross

John and Joanna Hamby

Nancy and Jeffrey Hoffman

Mr. Christopher Joy and

Ms. Cathy Velenchik

Lynde S. and Michael Karin

Mr. Robert Landino

Mr. and Mrs. Robert H. Lewis

Jack Light

Mr. and Mrs. Charles R. Lindberg

Thomas Fynan and William Loutré

Timothy and Sharon Lynch

Mark Masselli and Jennifer Alexander

Mr. and Mrs. George J. Michel, Jr.

Mr. and Mrs. John J. Nyikos

Mrs. Peter E. Paris

Donald G. Reed

Peter and Betsy Russell

Dr. and Mrs. Gerald Sandler

Dr. and Mrs. Jaime Santamaria

Mr. and Mrs. Henry S. Scherer, Jr.

\*Mable and Richard Seymour

Mr. Joseph Smith

Donna and Bill Stamm

Mrs. Ashton M. Tenney, Jr.

Carl and Jessica Thompson

Thomas F. Tyrseck and Marie V. Morosky

Dorinda and Mark Winkelman

Jef and Kate Wolter

The Cheryl Chase and Stuart Bear

Family Foundation

Sandra and Arnold Chase

Colchester Mill Fabric

Kay and Maia Chiat

Mr. and Mrs. Gordon U. Cobleigh

Maury and Sonia Cohn Foundation

Marilyn and Ted Colvin

Terri and Don Coustan

Mrs. J. Noyes Cray

Jim Cronin and Justine Moriarty

Mr. and Mrs. David W. Dangremond

Mr. and Mrs. Donald Daren

Bill Davis

William and Christine Donohue

Mrs. Nathan L. Dubin

Susan S. Egan

Mr. and Mrs. Robert K. Erf

Mr. and Mrs. J. Richard Farley

Gloria and Martin Feibish

Fran and Phil Feltman

Steve and Sharon Finger

David and Judy Fleischer

Muriel and Karl Fleischmann

Raymond J. Fontana

Mr. and Mrs. Charles M. Foster

Samuel S. Fuller

Zelda and Charles D. Gersten

Betty Gilman

Mr. and Mrs. Albert B. Glassenberg

Lea and Dick Goodman

Roger C. Goodspeed

\*David and Patricia Hadlow

Ron and Nina Harris

Al and Judy Heinke

The Hermann Family Charitable

Foundation

Attorney Harvey Hoberman and

Penny Parker

Betty Ruth and Milton Hollander

Mr. and Mrs. Alfred Arthur Hulse

Mr. Penfield Jarvis

Attorney and Mrs. Scott Jezek

\*Mr. Edward T. Kask

Susan and Peter Kelly

Ted and Kiki Kennedy

Harriett Kitzner

Mr. and Mrs. Simon Konover

Catherine Ladnier and J.M. Robinson

Lady Katharine Cruises

Mr. Russ Lallier

Robin Lewis and Robert Rich

Dr. and Mrs. Koen Loeven

Mr. and Mrs. Robert J. Lyons

Ken Maxwell and Arlene Tunney

Phyllis McDowell

Mr. and Mrs. F. P. McFadden, Jr.

## THE PRODUCER'S CIRCLE

### THE PRODUCER'S CIRCLE (\$1,000+)

Anonymous (2)

Mr. Daniel Adams

Sandy and Dave Adams

General and Mrs. Elliott B. Alter

\*Dolores L. Andrew

Mr. and Mrs. Joseph E. Arborio

John and Caron Avery

\*Greg and Joyce Barabas

Mr. and Mrs. Barton M. Bauers, Jr.

Mr. and Mrs. Bruce L. Blakeslee

David W. Bogan and Heather Hunt

Michael Bragulla

Dr. J. R. Buchanan

Mr. and Mrs. Anthony Cacace

Florence L. Carples

Mr. and Mrs. Russell Carter

\*Mr. and Mrs. Terry W. Chabot

Kay and Maia Chiat

Karen and Michael Cormier

Creative Transportation





# GOODSPEED MEMBERSHIP

Larry and Patty McHugh  
Service Station Equipment Inc.  
Mr. and Mrs. Jonathan Metcalfe  
Peter Johnson Musto  
\*Mr. and Mrs. David Ogden  
Mr. and Mrs. James Olson and Family  
Jane E. Ondovcsik  
Raymond and Marlene Piche  
Sam and Phyllis Pierson  
Willard and Sigita Pinney  
Philip W. Porter, Jr.  
Caitlin A. Quinn and Peter C. Garenani  
Racine Company  
Chuck and Dianne Ramsey  
Lt. Col. Robert A. Ridehoover  
J. Rosenkrantz and M. Cohen  
\*Diane M. Rottmann  
Mrs. Benjamin Schilberg  
Richard and Mary Schneller  
Fred and Carol Seeman  
Mr. and Mrs. Allyn Seymour, Sr.  
\*Karen and Allyn Seymour  
Mr. and Mrs. Martin C. Shapiro  
\*Mr. and Mrs. Frank Sherer  
Jerome and Marian Silverstein  
\*Richard D. Stapleton  
Henry Skip Steiner  
Sorenson-Pearson Family Foundation  
Beatrice Stokes  
Mr. and Mrs. William J. Stolba, II  
Mr. and Mrs. Stephen Tagliatela  
Judy B. Taylor  
\*Kathleen Thompson  
Mr. and Mrs. Emil Tillona  
Donald and Sharyn Timmerman  
Michael and Florence Timura  
Gertrude Tyrol  
Arthur E. Webster, Esq.  
RADM. Louise C. Wilmot USN (Ret.) and  
James E. Wilmot  
Mrs. Valentine Zahn

## ASSOCIATE PRODUCERS (\$500+)

Anonymous (4)  
Seth and Katey Adams  
Mrs. Ronald F. Agostini  
Fred and Roberta Allardyce  
Robert C. Alwine  
Billie and Peter Anker  
\*Ed and Eileen Annino  
Archambault Insurance, Inc.  
Mr. and Mrs. John C. Arena  
Mary B. Arnstein  
Bette and Bruce Avery  
Mrs. Jack Axelrod  
Sherri and Scott Baggett  
\*Paul, Cinda, Jay and Sam Barbuto  
\*Mr. and Mrs. Ray Barker  
Cynthia Bates and Jonathan Russell  
Dee & Ed Baum  
Denise Bernardo and Edwin Muentes  
Merle and Ron Bernstein  
Mr. and Mrs. J. P. Bischoff  
\*James Blackburn

Mr. and Mrs. Curtis L. Blake  
Alan Blanchard  
\*Mr. and Mrs. Gustaf R. Bodin  
Jan and Ron Bogdan  
\*Reverend and Mrs. Paul H. Bomely  
Kenneth and Judith Boudreau  
Stephanie M. Branta  
In Memory of Kay McGrath  
Nadine and Robert Britton, III  
\*Mr. and Mrs. James V. Bruni  
Helen Babcock and Tom Buttacavoli  
Robert Byrne  
S. E. Canaday, Jr.  
Mr. and Mrs. Barry A. Carpe  
\*Greg and Melinda Castanza  
Centerbrook Architects and Planners  
Mr. Michael Chaiklin  
Mr. Gregory Chase  
Sharon Chernesky  
Mr. and Mrs. Richard Chiaramonte  
Barbara L. Clark  
Scott and Jo Cleary  
Mr. and Mrs. Charles A. Clinton  
Linc and Lynette Cornell  
Donald and Sandra Costantino  
Omar Coffee Company  
Michael and Peg Curtis  
Ms. Danielle Danese  
Mr. and Mrs. Steven Daren  
Joel N. and Ruth Ann C. Davis  
Dr. and Mrs. Arthur C. DeGraf, Jr.  
Chuck Dell  
Brian and Linda Dewhirst  
Roy and Betsy Dickinson  
Mr. and Mrs. Jonathan Dodd  
Herbert Drower  
J.T. and Donna Dunn  
\*Mary Jane Dunn  
Jean W. Earle  
Colin Eastland and Joe Landry  
Dr. and Mrs. John R. Eddy  
Gene and Vera Ehnen  
Mr. and Mrs. Michael Elgee  
\*Frederick Elia  
\*Ms. Carol Engle  
Dasha Epstein  
Gloria and Edward Fisher, Jr.  
\*Lynne and Richard Fletcher  
Dr. and Mrs. Brendan M. Fox  
Dr. James Frost  
Avery and John Funkhouser  
Barbara A. Gbanielli  
Rona Gelber  
Ms. Robyn Goodman  
Gloria J. Gorton  
\*Mr. and Mrs. Mark B. Gossner  
Mr. Stephen Hahn  
Newell and Betty Hale Fund of  
Greater Worcester  
Mr. and Mrs. Burt Hallisey  
Al and Betsey Harris  
Hastings House Antiques  
Mr. and Mrs. Myron Hendel

Brian and Karen Henderson  
Sue Hessel and Karen Dahle  
William Hewitson  
\*Claudette, Ned, Maeve and Ciara  
T. Donald and Helene Hirschfeld  
Prudence Hoffman  
Diana and Paul Hughes  
James and Isabel Jackson  
Barbara and Ray Jacobsen  
Ms. Linda C. Jainchill  
Carol A. LeWitt and Bruce R. Josephy  
Lisa B. Walker & Robert Kaplan  
John S. Kartovsky  
Mr. and Mrs. Douglas E. Kehl  
Sallie L. Kemp  
Steven and Deborah Kleinman  
Ronald Klimas  
Mary Ellen Klinck  
Abbey and Stephen Kreinik  
Darlene F. Krenz  
Lady Katharine Cruises  
Frank and Elisabeth Landrey  
Christine LaSala and Ellen Lipschitz  
Dr. and Mrs. Robert E. Lebson  
Mr. and Mrs. David A. Lentini  
Roger and Carla Levien  
Barbara and Ira A. Levin  
\*James and Linda Lianos  
Mr. and Mrs. Brian Liistro  
Jean and John Linderman  
Peter and Rosemary Lombardo  
Phyllis and Ray Losnes  
Mr. and Mrs. Arthur Lovell, Jr.  
Joseph G. Lynch  
Mr. and Mrs. William C. Lyons  
Douglas R. Magee, Jr.  
Dr. Clare Manzi and Dr. Vincent Williams  
\*Joseph and Nancy Mazza  
Jay McAnally  
McCarty & Sons  
John and Amy McCauley  
Andrew and Bonnie Lee McKirdy  
Mrs. John F. McManus, III  
Thomas Moriarty  
Kevin Murphy  
Dr. and Mrs. Thomas J. Murphy  
Tom and Karen Murphy  
Mrs. Anne Navarro  
Robert and Carolyn Nelson  
Naomi and Jerry Neuwirth, M.D.  
David I. Newton  
William Nivison  
Allen J. Novakouski and Daniel J. Hutton  
Brian O'Brien  
Mr. and Mrs. G. Robert O'Brien  
William Orsini and Walter Smith  
\*Loren and Elaine Otter  
Dr. and Mrs. John Paardenkooper  
R.A. Parady and Sons, Inc.  
\*Ron and Carla Pariser  
Larry and Martha Parks  
Mr. Rolf Peterson  
Rod and Lucy Petrey



# GOODSPEED MEMBERSHIP

Ms. Helga Pfanner  
Dag and Nancy Pfeiffer  
Beverly and Brian Platner  
Mary and Lawrence Pocknett  
Rev. and Mrs. Marson Price  
John and Gergette Quilter  
Joan and George Racine  
C. L. and Rosina Raiteri  
Thomas S. and Anne A. Redmerski  
Mitchell and Lorraine Rochefort  
Eric and Sandra Rustici  
John and Fran Sadek  
Marilyn Safenowitz  
Jane and Morley Safer  
Patricia and Andrew Salner  
Mr. and Mrs. Jacob Salzman  
Susan and Russell Santora  
Mary and Joe Sargent  
Dr. and Mrs. Lee Sataline  
Linda R. Savitsky and Alvin G. Wolfgram  
Mrs. Elaine Sayadoff  
Dr. and Mrs. Stephen Scarangella  
Linda and Philip Scheffler  
Daniel W. and Sandra B. Schneider  
Dr. and Mrs. John Schowalter  
Jack and Bonnie Scott  
Fred and Barbara Sette  
Thomas and Pamela Shakun  
Mr. and Mrs. Edward J. Sharr, Sr.  
James and Penelope Sherrard  
Mr. and Mrs. Anthony Shetensky, Jr.  
Louis and Tracy Shoor  
Mr. and Mrs. H. William Shure  
Stuart and Arline Small  
Lon and Susan Smith  
Sara Sparrow  
Mr. and Mrs. Chris M. Steele  
Josephine Merck and James Stevenson  
Tom and Bonnie Stone  
Brenda J. Sullivan, CPA  
John H. and Susan Sullivan  
Suzio/York Hill  
Mr. and Mrs. Edward C. Swift  
Dr. and Mrs. Russell Sylvester  
Jennifer Shinn and Russell Tait  
Stewart Taubkin  
Joe and Eunice Thomas  
David and Laurie Tittle  
\*Sheila L. Tomlinson  
\*Mr. and Mrs. Paul Tracey  
Edwin B. Tuthill, Jr.  
Mrs. Arthur D. Van Winkle  
Jean B. Vogel  
Mr. and Mrs. Russell Waldo  
Judith and Steven Warner  
Patti and Howard Weiner  
Leslie and Richard Weinstein  
Victoria and William Winterer  
John and Pandora Wohler  
Symond and Martha Yavener  
Ferne and Peter Youmans  
\*March and Lorry Young  
\*Mr. and Mrs. Robert Yudkin

\*Eleanor E. Zajac  
Dr. and Mrs. Robert Zavod  
Nancy and George Zitnay  
Mr. and Mrs. Peter R. Zucco

## DIRECTOR'S SOCIETY (\$250+)

Anonymous (5)  
Mrs. Paul D. Abercrombie  
Richard and Merrill Adams  
Taggart Adams  
William D. Addison, Jr.  
Barbara Agar  
Dr. and Mrs. Sultan Ahamed  
Howard J. Aibel  
J. T. Allen  
Rose M. Allen  
William R. Allen  
Mary Allingham  
Phyllis and Vincent Amato  
Mr. Glenn Andrews  
Dr. and Mrs. C. Wallace Andrias  
Paul and Christine Antaya  
Charles J. Anthony  
Mr. and Mrs. Drew Ashley  
Martha Atkinson and Deborah Lyon  
Mr. and Mrs. Hillel J. Auerbach  
Robert Babcock  
John, Nancy and Nikki Baccaro  
Kevin and Terry Baldwin  
Michael and Shelley Barker  
Mr. and Mrs. David N. Barry  
Myrna Baskin  
Michele and Sherman Baumann  
Cynthia and Allen Beavers  
David A. and Alice C. Belden  
Mrs. Ellen W. Bell  
Lee Ann Benadiva  
Gary and Ruth Benanav  
G. Spencer Berger  
Donald Bidwell  
Joseph and Kerry Biega  
Barbara and Barton Bienenstock  
Mr. and Mrs. W. Richard Bingham  
In Memory of Carol J. Blodgett  
\*Dr. and Mrs. Richard F. Bloom  
G. Howard Blythe  
E.L. Boardman  
Mr. Jeff Boyd  
Wallis and Laurie Boyd  
Don and Susan Boyle  
Desolie and John Boys  
David Bradley and Kathleen Schiano  
Attorney and Mrs. Peter F. Brady  
\*Liliane T. Bramer  
\*Gordon W. Braudaway  
Todd and Sylvia Brewster  
Bruce Briggs  
Alison and Stephen Brinkmann  
Joyce and Harold Buckingham  
Eugene and Ann Buckley  
Eileen Buckley  
Mr. and Mrs. John F. Budd, Jr.  
\*Carla and Richard Bue

Peter S. and Sally R. Burgess  
Mr. Paul H. Burnham and  
Mrs. Karen A. Birck  
Ned and Christine Burt  
Mr. and Ms. Robert Butkus  
Edward Cape  
Maria and Bing Carbone  
Paul C. and Patricia B. Carlson  
Anne and Jim Carroll  
Robert and Carole Carter  
Michael and Lori Cartwright  
\*Leon and Marilyn Case  
George and Frances Caspar  
Theodore S. Chapin  
Richard O. Cheney  
John and Pinky Chidsey  
\*Ms. Robin Chu  
Kyung H. Chung, M.D.  
Jack and Bertie Chuong  
Robert E. Cienian  
\*Janet Clark  
Peter and Marcelyn Clarke  
Barbara Greller and Harold Cohen  
Marshall Cohn  
Kay and Ted Colangelo  
Philip and Clio Coles  
Andrew and Elizabeth Comcowich  
Dr. and Mrs. Michael M. Conroy  
Kevin and Kate Conway  
Gloria K. Corbit  
Cornerstone Construction Services, Inc.  
Martin and Margaret Coughlin  
Core Navigation, LLC  
Holly and Steven Craig  
Marie and Nicholas Crisp  
Mr. & Mrs. Cyril Crocker  
Dr. Amy Crockett  
Timothy Cronin  
Ms. Donna Crossley  
Mr. and Mrs. Samuel D. Crum, Jr.  
Joan K. Curry  
\*Henry F. Curtis  
Jane and Newell Curtis  
Stanley M. Dalrymple  
Eric and Patricia Daniels  
Susan Daniels  
Stanley K. Dean  
Mrs. John and Elyssa Del Valle  
Sherrie Deveau  
\*Linda W. DeYoung  
Norma Diamond  
\*Mr. and Mrs. Richard DiPietro  
Arthur and Edythe Director  
Senator Chris Dodd and  
Jackie Clegg Dodd  
John A. Donaghue  
Mr. and Mrs. John F. Donahue  
John and Pat Doolittle  
\*Dr. and Mrs. John E. Dresslin  
David and Deborah Dressler  
Herbert Duey  
Laura and James Duncan  
Rose and Louis Dunlap



# GOODSPEED MEMBERSHIP

Jim and Judi Elder  
J. Andrew Engelhardt  
Connie Engelking  
Eloise Epstein  
Mrs. Florence R. Ergin  
Liza and Jim Ervin  
Sheldon Erwine  
Essex Hardware  
Jon and Anna-Lena Estes  
Dr. and Mrs. Mark T. Fallon  
Jackie and Bill Falman  
Michael F. Farina, Jr.  
Robert M. Fechter and Gilda S. Brock  
Lil B. and Alex P. Ferguson  
Dr. Michael Ferry and Ms. Cynthia Skinner  
Ann Field  
EMCOR Services -  
New England Mechanical  
Dr. and Mrs. William Fitzgerald  
Brenda and Chad Floyd  
Frances H. Forde  
\*Janet M. Forgey  
Mr. and Mrs. Raymond Fornwald  
Peter Fournier  
The Honorable and Mrs. Frederick A.  
Freedman  
Eula and Glenn Fresch  
Frank Frey  
George Fusco  
Dr. and Mrs. Gregory J. Gallivan  
Barbara and Ray Galloway  
The Reverend and Mrs. Ronald S. Gauss  
Lawrence Gemma and Patricia Brigham  
Rick Gibbons  
Mario S. Gioco, C.P.A.  
Wil and Mary Ellen Gladue  
Mr. and Mrs. Samuel Golding  
\*Dr. and Mrs. Donald Gonci  
Dr. and Mrs. Lawrence Goodman  
Mr. and Mrs. Malcolm Graff  
Ray and Judy Grasso  
Bill Gratz and Jay Bruno  
Carole and Harold Greenbaum  
Beverly and Arnold C. Greenberg  
Joe and Heidi Groeger  
Peter and Barbara Guerra  
Mr. and Mrs. Robert P. Haff  
Mark and Julie Haight  
Dr. and Mrs. John J. Haksteen  
Bill and Paula Harkins  
Ron Harner and Clint Harris  
Mr. and Mrs. Arthur H. Harris, Jr.  
Dwight and Pat Harris  
Sue Hart  
Pat and John Hechavarria  
\*Mr. and Mrs. Donald P. Henry  
Sandra S. Hewitt  
George and Joan Hogan  
Patricia A. Holmes  
Mr. and Mrs. Robin Honiss  
Paul Horoschak  
Chris and Anne Howard  
Barbara and John S. Hubbard

Alan and Ann Hughes  
Mr. and Mrs. Leslie A. Hyatt  
Daryl and David Ifkovic  
Lou Blumenfeld and  
Jacqueline Isaacson  
Coral and Ron Jodice  
Mrs. Curtiss Johnson, Jr.  
Glen Johnson  
Mrs. Charles F. Jolidon  
Mr. Christopher Jones  
Hugh Jones  
Dr. and Mrs. Andrew Keene  
Jennifer and Hermann Keilich  
Dr. Brian J. Kelly  
John and Betty Kelly  
Nancy Mattoon Kline  
Michael J. Klingensmith and  
Ruth A. Shields  
Dr. and Mrs. Kort C. Knudson  
\*Kenneth Koe  
Hans and Christina Koehli  
Mrs. Walter O. R. Korder  
Jerry and Bunni Korman  
Dr. and Mrs. Steven Korn  
Mr. and Mrs. Clinton D. Korngay  
The Kozliks  
Mr. and Mrs. John Krawski  
Douglas R. Krenz  
\*James Kruk  
Max and Ruth Kuziak  
Sheila Laing  
Rev. Roger J. Lamoureux  
R.N. LaRosa Corp.  
\*Ken and Barbara Larson and  
Thelma and June  
Dr. and Mrs. Stanley Lavietes  
Susan Lavoie  
Harmon and Elizabeth Leete  
Mr. and Mrs. Eliot Leibowitz  
Mr. and Mrs. Terrence T. Lescoe  
Lorraine Lincoln Lieberman  
Lindquist Insurance Associates  
Mr. and Mrs. Louis Loffredo  
Roberta and Joseph Lombardino  
Lou Ludgin  
Mr. and Mrs. Ian G. MacDonald  
Emanuel and Irene Makiaris  
Mr. and Mrs. James M. Makuch  
Kenneth & Michelle Malinowski  
William Manafort  
Anita and William Mancoll  
Mr. and Mrs. John F. Mangold  
Arthur and Elizabeth Maniatty  
Dr. and Mrs. Keith Martin  
Mr. and Mrs. Jack Matava and Family  
Kevin and Jean McCarthy  
Mr. and Mrs. David McClatchie  
In Loving Memory of Mary C. Palumbo  
Paul and Jan-Gee McCollam  
Virginia S. McCurdy  
Mr. and Mrs. Gordon McGovern  
Mr. and Mrs. Victor McGrady  
Jim and McIntyre

Thomas McKernan  
Mr. and Mrs. John McParland  
Jacqueline and James McKinnis  
Mr. and Mrs. Ronald B. McEhlan  
Mr. David Mika  
Mary Miko and Joseph Migliaro  
Mr. and Mrs. George B. Miles  
Alf Millard and Barbara Butler  
John and Patricia Miller  
Sandra Milles  
Margie and Lance Minor  
Meg and Scott Mokoski  
Joe and Beth Molder  
Nancy O. Moreland  
Jan and Harold Moskowitz  
Agnes Murawski  
Mr. and Mrs. Stephen J. Negri  
Dr. Debra B. Nevas and  
Dr. Jonathan T. Abrams  
Gail and Anthony Newman  
Matthew Newton Family  
Ms. Sarmite Nielsen  
Ann Nyberg and Mark Mamula  
Mike and Gwen O'Connell  
Daniel Offutt  
Cecil J. Olmstead  
Alan and Joyce Ortnier  
Osterman Propane, Inc.  
Rea and Mary Ann Outman  
Mr. and Mrs. Paul Palmer  
Peter and Candace Pappas  
Mr. and Mrs. David Pearson  
Carol and Richard Pellegrine  
\*Bryan Peretto  
Lyn Mathews Perrin  
Charlotte and Charles Peterson  
\*William and Andrea Phinney  
Chris and Beth Pitt  
Angela and Tim Ploszaj  
Mr. and Mrs. Myron J. Poliner  
Mark and Traci Polinsky  
Charles and Janis Potts  
Mr. and Mrs. Robert W. Pratt, Jr.  
Anella C. Preble  
Patti Proctor  
\*Kate and Steven Rakowski, CFA  
John Reed  
Alvin and Lois Reiner  
Dr. and Mrs. Howard L. Reuben  
Joanne E. Roach  
Mr. and Mrs. Jeffrey D. Robbins  
\*Eleanor Rogers  
Alix Rokita  
Gary Rounseville  
Neil and Lynn Ruenzel  
Ms. Maggi Ryan  
Harold and Dorothy Safalow  
Dorothy and Peter Samuels  
Anthony and Rita Santostefano  
Ron and Cleora Savitski  
Ann P. Sawicki  
Lawrence A. Sax  
Pietrina and Craig Saxton



# GOODSPEED MEMBERSHIP

David and Jane Schaiman

William J. Scheide

\*Mr. and Mrs. Alan Schiff

Karl and Judy Schumacher

Mr. and Mrs. Stephen Schwartz

Mr. and Mrs. William B. Seaver

Mr. and Mrs. Benjamin Sevitch

Katy and Frank Sherer

Sonia and Mark Shipman

Elizabeth and Peter Shutkin

\*Francis and Lorette Simic

John and Millie Simonzi

Mr. and Mrs. David Sloan

Mr. and Mrs. Lawrence A. Smedberg

DeForest and Nancy Smith

Jack Solan

Mr. Harold S. Spitzer and

Mr. Thomas A. Martin

Mr. and Mrs. Lawrence Starr

\*Alex and MaryAnn Stein

Joan and David Stewart

Peter and Betsy Sturrock

Carol Z. Sundlin

Mr. and Mrs. Richard W. Swan

Mr. Allyn F. Sweet

Donna and Brad Tafel

Charleen Taylor

Peter H. Taylor

Joe and Eunice Thomas

\*Dorothy, Kathleen, Ann & Arthur Thompson

Lincoln Thompson, Jr.

\*Mr. Mark Tice & Ms. Lee Ives

Mr. and Mrs. John M. Timken

Charles and Lida Tingley

Joseph and JoAnne Tobin

Mr. and Mrs. James J. Toomey

Mr. and Mrs. David T. Totman

Robert Treuhold

Laura and Harold Trinkoff

Larry Trudeau

Neal Tuohy, Jr.

John and Judy Turpin

Bruce C. Tuthill & Ellen M. Lee

Gloria Tuttle

Ragged Rock Marina

Mr. and Mrs. Edward Voskowsky

Dr. and Mrs. Milton Wallack

\*Beverly and Matthew Walton

Jerry and Linda Wanosky

Burton Warner

George and Shirley Warner

Michael and Ellen Wasyl

Ruth K. Webber

\*Claire and Nick Weiler

Richard and Suzanne Weinstein

Bob and Roz Weinstein

Cathy Welch

\*Mr. and Mrs. Richard M. Wenner

Michael Wheeler

Tom and Jane White-Hassler

Carol A. Wiggins

David and Margaret Wilcox

Babs and Kate Wilkinson

\*Dr. and Mrs. John Willson

Mr. and Mrs. George W. Wilson

Mr. Frederick S. Winkley

Mr. Michael Wolchesky

Mr. and Mrs. Clifford Wood

Janne and Donald Workman

Peter and Joyce Wortman

Timothy and Susan Wrinn

Mr. and Mrs. Richard I. Wrubel

William and Joan H. Wynne

\*Jim and Mary Yanosy

Dr. and Mrs. Francis W. Zak

Mr. and Mrs. Fred Zeytoonjian

Arthur Zieky and Bill Witkowski

Mr. Richard Zilinskas

Dr. and Mrs. James Zwerneemann



## Bishopsgate Inn



Built in 1818 by Horace Hayden, a merchant and shipbuilder, this exceptional Colonial Home welcomes guests seeking gracious hospitality and well appointed accommodations in a secluded setting in the middle of town.

Wireless Internet and TV availability

GOODSPEED LANDING • P.O. BOX 290  
EAST HADDAM, CONNECTICUT 06423

TELEPHONE:

860-873-1677

[www.bishopsgate.com](http://www.bishopsgate.com)

THE KAGEL FAMILY, INNKEEPERS



COPYRIGHTS - TRADEMARKS

INTERNET LAW

Frederick A. Polner, Esq.

POLNER LAW OFFICE

16 Forest Hills Drive  
Madison

[fred@polnerlaw.com](mailto:fred@polnerlaw.com)



# GOODSPEED MEMBERSHIP

*Goodspeed Musicals acknowledges the following corporations that have provided matching gift contributions for Goodspeed Members this season. Members with an asterisk (\*) next to their names have received these donations from their employers.*

Aetna Foundation	General Re Corporation	NRG Global
Allied World Assurance Company	GlaxoSmithKline Foundation	Pfizer
American Express Foundation	The Hartford Courant	Pfizer Pharmacia
American International Group, Inc.	IBM	The Phoenix Companies
Amica Companies Foundation	J.P. Morgan Chase Foundation	Pitney Bowes
Argonaut Group, Inc.	Johnson & Johnson	Prudential
AT&T Foundation	John Hancock	Saint-Gobain Corporation
Bank of America	Lincoln Financial Group Foundation	The Stanley Works
Chubb & Son	Macy's Foundation	Time Warner
CIGNA Corporation	Mass Mutual Financial Group	Travelers Insurance Company
Diageo North America	The Meredith Corporation Foundation	Unilever
Dominion Foundation	Merrill Lynch	United Technologies Corporation
ExxonMobil Corporation	Mobil Foundation, Incorporated	Verizon
Gartner Matching Gift Center	New York Times Company Foundation	Wachovia
GE Foundation	The Northrup Grumman Foundation	

*Goodspeed Musicals gratefully acknowledges the following staff for contributing to the 2010 Employee Campaign.*

William D. Addison, Jr.	Paulette Ganoë	Mr. and Mrs. Stephen Moore
Robert C. Alwine	Adam Goodrun	Sarah Moulton
Cinda and Paul Barbuto	Gloria J. Gorton	Robert and Betty Myska
Michele and Sherman Baumann	Kim Gowac	William Nivison
Robert Bennett	R. Glen Grusmark	Michael O'Flaherty
Linda Benson	Hattie Kittner	Gwen and Dan Pond
Sarah Bowen	Donna Lynn and Jay Hilton	Caitlin Quinn
Sara and Neil Breen	Elisa Hale	John Riccucci
Lori and Michael Cartwright	Kim Kane	Joshua S. Ritter
Margaret C. Chapell	Erica Largen	Mr. and Mrs. Jeffrey D. Robbins
Susan M. Cipriani	Shanna Lisitano	Diane M. Rottman
Mr. and Mrs. Timothy D'Amato	Mr. and Mrs. David Loffredo	Mr. and Mrs. Gerald Rucker
Will DeMore	Patricia Logan	Marilyn Rybak
Matthew Dunand	Susan K. McCann	Samantha Scanniffe
Jennifer O. Etheridge	Kristan McLaughlin	Beryl and Henry Thorpe
Barbara and Ryan Ford	Dan McMahan	Donna and Brad Tafel
Lou Fuchs	Mary Miko and Joseph Migliaro	Leah Thorndike
Elizabeth Fuqua	Linda Misarski	Babs and Kate Wilkinson

HERE'S OUR BANK STATEMENT:

“Supporting the arts is  
our way of performing.”

And hearing that is like music to our ears!




BANK

Make a statement.™

(888) 570-0773

liberty-bank.com

Member FDIC. Equal Housing Lender. 

Audi  
Truth in Engineering



**Pure Performance.  
Absolute Perfection.**



Get your new or Certified pre-owned Audi at world-class Hoffman Audi with two locations: E. Hartford & New London.

*Driven by trust.™*

**Hoffman Audi**

Conn. Blvd, E. Hartford and  
Broad St., New London

**860.289.7721**

**hoffmanaudi.com**

**Hoffman**

THE ANNUAL  
NUMBER OF  
HEART ATTACKS  
COULD TAKE YOUR  
BREATH AWAY.

SO COULD  
JUST ONE  
HEART ATTACK.

Shortness of breath and difficulty breathing are just two warning signs of a heart attack. Call 911 if you experience any warning sign. Learn the other signs at [americanheart.org](http://americanheart.org) or call us at 1-800-AHA-USA1.

American Heart  
Association   
*Learn and Live.*

© 2010, American Heart Association.





# GOODSPEED MUSICALS STAFF

## ADMINISTRATION

Harriett Kittner ..... *General Manager*  
Edward C. Blaschik ..... *Theatre Manager*

Donna Tafel ..... *Assistant to Michael P. Price*

William F. Nivison ..... *Director of Finance*  
Joanne D'Amato,  
Samantha Scaniiffe ..... *Accounting Assistants*

Caitlin A. Quinn ..... *Director of Development*  
Sara Breen ..... *Manager of Corporate and  
Foundation Relations*  
Gloria Gorton ..... *Director of Major Gifts*  
Mary Miko ..... *Special Events Coordinator*  
Sue Cipriani ..... *Development Operations Manager*  
Joel Glassman ..... *Development Intern*

Dan McMahan ..... *Director of Marketing and  
Public Relations*  
Lori A. Cartwright ..... *Advertising Manager*  
Elisa G. Hale ..... *Public Relations Manager*  
Briana M. Bridgewater ..... *Marketing Assistant*  
Elizabeth Jordan ..... *Marketing Intern*  
Diane Sobolewski ..... *Official Photographer*

Michele R. Baumann ..... *Member Relations Manager*  
Shannon Robbins ..... *Membership Secretary*

Cinda Abercrombie Barbuto ..... *Ticket Sales Manager*  
Elizabeth Diamond ..... *Box Office Manager*  
Rachael N. Carlson ..... *Assistant Box Office Manager*  
Roger-Paul Snell ..... *Box Office Supervisor*  
Paul Boccia, Madeleine Holly, Catherine Joseph,  
Shanna Lisitano, Barbara Wilkinson,  
Alicia Wilmes ..... *Box Office Representatives*  
William Addison ..... *Subscription Services Manager*  
Madeleine Holly, Kim Kane,  
Linda Misarski ..... *Subscription Services  
Representatives*  
Meg C. Chapell ..... *Group Sales Manager*

Kristan McLaughlin ..... *Company Manager*  
Elise Vaux ..... *Assistant Company Manager*  
Nicole Herrington ..... *Company Assistant*

Joshua S. Ritter ..... *Education Director/Librarian*  
Katie Griswold ..... *Education Assistant*  
Caitlin Saporito ..... *Producing Intern*  
William Morison Dickinson,  
Ryan Thomas, Lauren Wolter ... *Library Interns*  
Jeffrey Mays ..... *Systems Administrator*  
Linda Benson ..... *Receptionist*

Paulette C. Ganoe,  
Beryl W. Thorpe ..... *House Managers*  
Barbara Ford, Betty Fuqua, Kim Gowac,  
Brittany Halleck, Diane Roitman ... *Assistant House Managers*  
Bob Bennett, David Loffredo,  
Louie Loffredo, Pat Logan ..... *Bartenders*  
Marilyn Rybak ..... *Building Services Assistant*  
Stephen Moore, Robert Myska ... *Building Services*

## PRODUCTION

Adam Goodrum ..... *Technical Director*  
Andrew Becker ..... *Assistant Technical Director*  
Chris Phillips ..... *Master Carpenter*  
Tyler Donahue, Rasta Gronback,  
Zeb Huits, Chris Petrizzo ..... *Shop Carpenters*  
Mic Murphy ..... *Stage Carpenter*

Carla Tiezzi ..... *Charge Scenic Artist*  
Katie Zeranski ..... *Staff Scenic Artist*

Ellen Lampros ..... *Props Manager*  
Troy A. Junker ..... *Master Artisan*  
Blair Culledge,  
Thomas Stephansky ..... *Props Artisans*  
Natalie Slater ..... *Journeyman Artisan*  
Lou Fuchs ..... *Props Carpenter*  
Aaron Peraza-Baker ..... *Props Run Crew Head*

Cindy Kubala ..... *Costume Director*  
Melissa Richards ..... *Assistant Costume Director*  
John Riccucci ..... *Wardrobe Master*  
Emma Mead ..... *Wigs Artisan*

Jay Hilton ..... *Lighting and Sound Supervisor*  
L. Clay Little ..... *Production Electrician*  
Jessica Murphy ..... *Production Sound Engineer*

Erica Largen ..... *Assistant Production Manager*

Brandon Magid ..... *Music Assistant*

Njaye Olds ..... *Acting Costume Rental Manager*  
Dawn Barlow, Lori Bisaccia, Alyssa Fetera, Catherine Joseph,  
Jennifer Tellier ..... *Costume Rental Assistants*

## FOR THIS PRODUCTION

Camden Gonzales ..... *Assistant to the Choreographer*  
Sonoka Fukuma-Gozelski ..... *Assistant Set Designer*  
Holly Cain ..... *Assistant Costume Designer*  
Richard Chamblin ..... *Assistant Lighting Designer*  
Linda-Cristal Young ..... *Master Electrician*  
Alex Jauncill, Greg McGuire ..... *Electricians*  
Laura Fickley ..... *Assistant Sound Engineer*  
Allegra Sargent ..... *Wardrobe Assistant*  
Suzanne Apicella,  
Samantha Gallardo ..... *Production Assistants*  
James Stenborg ..... *Music Copyist*  
Molly Sturges ..... *Piano Technician*

Christine Botta, Andrea Goodwin, Allison Jung, Kristin Krause,  
Patti Lizotte, Angie Meninger, Christina Rainwater, Phyllis Tela,  
Samantha Yaeger ..... *Scenic Artists*

Bonnie Berkowitz, Alice Böhm, Deborah Glassberg,  
Sharon Murphy Boski, Miguel Romero, Harry Smythe, Robert Smythe,  
Susan Smythe, Tara Webb ..... *Puppet Builders*

All-Stitch, Byron Batista, John Cowles,  
Roberta Hamelin Costumes ..... *Costume Construction*  
Arnold S. Levine, Inc ..... *Millinery*

Laura Battista, Chad Bigelow, Meghan Dougherty, Kelley Finn,  
Anna Hines, Louis Kreienkamp, Alanna Maniscalco,  
Eric Miller, Alexandra Reynolds, Erin Ryan,  
Lauren Williams ..... *Apprentices*

*Elaine McKirdy Student Apprentice: Alyssandra Docherty*

*Special Thanks: Bank Street Cobbler; Craig Dickens;  
LaDuca Productions, Ltd.*

## IN APPRECIATION

Goodspeed Musicals would like to thank the following for their contributions to our productions: all who volunteer their time and talents to Goodspeed, the Goodspeed Opera House Gift Shop and ushering staff, the Goodspeed Guild and Production Committees, Mae Wantanabe of ZCMI Flower Shop.



## for your INFORMATION

### Box Office Hours

Monday & Tuesday: 10 a.m. – 5 p.m.  
Wednesday & Thursday: 10 a.m. – 8 p.m.  
Friday & Saturday: 10 a.m. – 8:30 p.m.  
Sunday: 10 a.m. – 7 p.m.

**Box Office Telephone:** 860.873.8668

**Box Office E-mail:** [boxoffice@goodspeed.org](mailto:boxoffice@goodspeed.org)

### Bar and Gift Shop:

The Goodspeed Porch Bar and Gift Shop, located on the main floor, are open one hour prior to performances and during intermission.

### Website:

Visit our website at [goodspeed.org](http://goodspeed.org) to buy tickets 24 hours a day or learn more about upcoming and past productions at Goodspeed!

Visit us at



### Infra-red Hearing System:

The Goodspeed Opera House offers the Sennheiser infra-red hearing system to assist hearing-impaired patrons through the generosity of Carol Sirot. Free headsets are available from the box office.

### Special Services:

Goodspeed provides elevator service to the orchestra level of the Opera House. To avoid the steps in front of the theatre, please ask for a House Manager when you arrive. You will be directed to our elevator at street level outside the building. Handicapped parking is located in front of the Gelston House. If you require special assistance of any kind (for example, to remove a theatre seat to accommodate a wheelchair, early admittance to the theatre, or assistance getting to your seats), please inform the Box Office when you purchase your tickets.

### Parking:

Free parking is available to Goodspeed patrons. Turn right after the Gelston House when passing the theatre and free parking is on the right. A path along the river leads from the parking lot across a foot bridge to the theatre.



### Goodspeed Guild:

The Goodspeed Guild is a volunteer organization dedicated to supporting Goodspeed Musicals' operations and productions. Since 1975 it has provided services to artists, patrons, and staff on a year-round basis, while offering its members the opportunity to become part of the behind-the-scenes activities at Goodspeed. To find out about volunteer opportunities that fit your interests and schedule, visit our website at [goodspeed.org](http://goodspeed.org) or contact Amy Campbell at 203.494.7328.

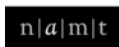
*Sets, costumes, and props are designed especially for the Goodspeed Opera House and are built in Goodspeed Musicals' shops.*

*Goodspeed Musicals is a professional theatre operating under an agreement between the League of Resident Theatres and Actors' Equity Association, the Union of Professional Actors and Stage Managers in the United States. Orchestra members are represented by Middletown Musicians Protective Association, Local 499, American Federation of Musicians.*



The scenic, costume, lighting and sound designers in LORT Theatres are represented by United Scenic Artists, Local USA-929 of the IATSE.

Goodspeed Musicals is a member of The League of Resident Theatres.



NATIONAL ALLIANCE  
for MUSICAL THEATRE



The Director and Choreographer are members of the Society of Stage Directors and Choreographers, Inc., an independent national labor union.

Coldwell Banker Residential Brokerage

LEADING THE  
LUXURY HOME MARKET...



...LOCALLY AND  
AROUND THE WORLD



OLD LYME  
86 Halls Road  
860.434.8600

OLD SAYBROOK  
48 Main Street  
860.388.1100

ESSEX  
3 Main Street  
860.767.2636

[www.ColdwellBankerMoves.com](http://www.ColdwellBankerMoves.com)



©2010 Coldwell Banker Real Estate LLC. Coldwell Banker is a registered trademark licensed to Coldwell Banker Real Estate LLC. An Equal Opportunity Employer. Equal Housing Opportunity. Owned and operated by NRT LLC. REG485 03/10

EMC = European Motorcars



Very Smart.

EUROPEAN  MOTORCARS

Sales | Service | Collision Center

860-632-2355

Newfield St., Middletown

[www.european-motorcars.com](http://www.european-motorcars.com)

**TOURS OFFERED DAILY—VISITORS WELCOME!**

## *The Saybrook at Haddam*



### **The Best-Kept Secret in Retirement and Assisted Living**

We are a “hidden gem” in the heart of the Connecticut River Valley – waiting for you to discover our unmatched value as the area’s premier retirement and assisted living community. The Saybrook at Haddam offers gracious retirement living and quality assisted care.

#### **Come see for yourself!**

- Visit our colonial-style manor, nestled near the Connecticut River
- See our bright and spacious apartments and extraordinary common areas
- Learn about our services and activities
- Meet our dynamic team of professionals

Located at 1556 Saybrook Rd., Haddam.

For a private tour, call David Downey at  
860-345-3779. Visit our website at

[www.thesaybrookathaddam.com](http://www.thesaybrookathaddam.com).



*An Assisted Living Retirement Community*

**GRACIOUS RETIREMENT LIVING ~ QUALITY ASSISTED CARE**



# VW OF OLD SAYBROOK

VISIT US AT 319 MIDDLESEX TURNPIKE OLD SAYBROOK OR ON THE WEB AT  
[vwoldsaybrook.com](http://vwoldsaybrook.com) OR CALL US AT 860-388-3400  
 COME IN AND TEST DRIVE ONE OF OUR CLEAN DIESEL'S

JETTA SEDAN TDI 42 MPG



SPORTWAGEN TDI 42 MPG



GOLF TDI 42 MPG



TOUAREG TDI 25 MPG



## POLITO & QUINN, LLC

National Board Certified Trial Attorneys

Attorneys Polito and Quinn are pleased to have been selected to **Connecticut Super Lawyers®** for the 3<sup>rd</sup> Consecutive Year  
 And  
**New England Super Lawyers**



Michael J. Quinn, Esq.  
Admitted in CT



Humbert J. Polito, Jr., Esq.  
Admitted in CT & RI

### Trials in All State & Federal Courts in Connecticut & Rhode Island

- |   |                          |                        |                                |
|---|--------------------------|------------------------|--------------------------------|
| Personal Injury & Wrongful Death Claims | • Auto & Cycle Accidents | • Fall Down Accidents  | • Brain & Spinal Cord Injuries |
| Medical Malpractice                     | • Defective Products     | • Dog Bites & Attacks  |                                |
|   | • Failure to Diagnose    | • Physician Negligence | • Hospital Negligence          |
|   | • Birth Injuries         | • Nursing Negligence   |                                |

(860) 447-3300 567 Vauxhall Street Ext. Suite 230, Waterford, CT  
[www.politoandquinn.com](http://www.politoandquinn.com)



## WESTBROOK INN

*Bed & Breakfast*

*Voted The Most Elegant Inn*

Westbrook, CT  
 800-342-3162 • [www.westbrookinn.com](http://www.westbrookinn.com)

*Visit Our Sister Inn*  
[www.bushnellhouse.com](http://www.bushnellhouse.com)  
 Westbrook, CT

BUSHNELL  
 HOUSE  
 HISTORIC INN



EST 1840



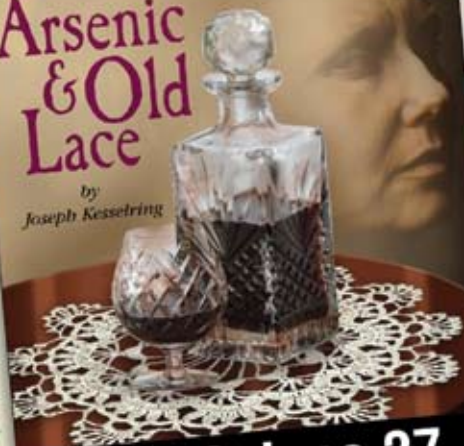
THE IVORYTON PLAYHOUSE  
*presents*

## 2010 SUMMER SEASON

*We also have  
Friday morning shows  
for the kids!*

### Arsenic & Old Lace

by  
Joseph Kesselring



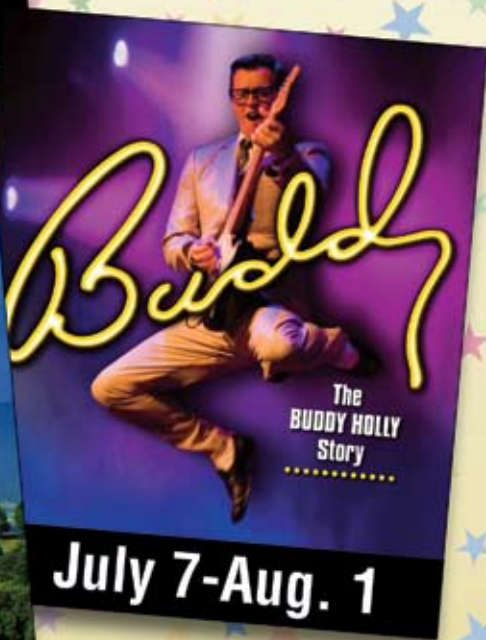
**June 9-June 27**

### FINLIAN'S RAINBOW

by E.Y Harburg &  
Fred Saily



**Aug. 11-Sept. 5**



The  
BUDDY HOLLY  
Story  
.....

**July 7-Aug. 1**

For tickets and information call **(860) 767-7318**  
or visit us on line at [www.ivorytonplayhouse.org](http://www.ivorytonplayhouse.org)

With support from  Connecticut Commission on Culture & Tourism.

This Institution is an Equal Opportunity Employer.



# Help With A Heart LLC



Help With A Heart LLC is a home health care service designed to address the medical and personal needs of the elderly, disabled and their families. Our organization is dedicated to providing professional care while maintaining the dignity and confidentiality of our clients.

- Household Management Services
- Personal Care Services
- Companion Services
- Transportation

(860) 434-2351 • (860) 391-1958  
LynnAFarrell@comcast.net  
HCA 000455



## One gift, 60 choices.

Give the gift of our fine shops and restaurants. Gift cards can be purchased at the Mohegan Sun Box Office or [mohegansun.com](http://mohegansun.com).



## The SHOPS At Mohegan Sun

**Sometimes  
cravings begin  
after you dine.**

Indulge yourself in our collection of unique shops after you've sampled one of our fine restaurants. Convenient and accessible, yet oh so hard to leave. Located in Mystic Country. For more information, call 1.888.226.7711 or visit [mohegansun.com](http://mohegansun.com).



Atlantic Seafood is proud to offer

# barramundi

AUSTRALIAN SEA BASS

*Born in Australia*

*Sustainably Raised  
in New England*

*Great whole or filleted*



*"It's the best fish I've ever worked with  
and I'm putting it on my menu"*

Patrice Rames, Executive Chef  
Patou, Philadelphia



Experience Barramundi - Australia's premier fish.  
Prized for its delicate texture, buttery taste and versatility,  
Australis Barramundi is quickly becoming a favorite  
among top chefs nationwide.

**Available Now!**



860-388-4527

1400 Boston Post Road • Old Saybrook, Connecticut

Open 7 days a week



## *We love the Music!*

*Enjoying the arts adds  
vitality to our lives.  
More life enriching qualities  
are included in our  
HealthyLife™ Services program.  
Ask Marian about the art of living  
at Chester Village West  
(860) 526-6800*



*Exceptional Service, Established Charm, Exciting Future.*

317 West Main Street • Chester, CT 06412  
(860) 526-6800 • Fax (860) 526-6018  
[www.ChesterVillageWestLCS.com](http://www.ChesterVillageWestLCS.com)



A Life Care Services Community



## summer's here at last!



the fish sisters  
clothing & accessories

Come shop all the names you love! Like Bryn Walker, Flax, Iridium, Nomadic Traders, Cut Loose and more, in fresh styles and colors.  
Plus, accessories, gifts and Chamilia too!

**2 norwich road, east haddam, ct 06423 860-873-1326**  
**Hours: Wednesday-Saturday 10-5, Sunday 11-5**

**(Just up the road from the Goodspeed!)**

Some companies may have lost sight  
of the fine print on certain documents.



We haven't.

Clients are the assets that matter.

The professionals at St. Germain Investment Management recognize that a standard exists when it pertains to fiduciary responsibility. Because at the end of the day, what matters most is the answer to this question:

*"Is this decision in the best interest of our client?"*



LEADING INVESTORS SINCE 1924™

100 Pearl Street  
Hartford, CT 06103  
860-727-9530

1500 Main Street  
Springfield, MA 01115  
413-733-5111



[www.stgermaininvestments.com](http://www.stgermaininvestments.com)





296573

Life can be a  
fun ride with the  
right ticket.

The line for trusted financial  
advice begins here.

296573

296573

ADMIT  
ONE

296573

362379

★ ★ ★ ★ ★ ★ ★ ★  
TICKET  
★ ★ ★ ★ ★ ★ ★ ★

362379

For more information,  
call Inflex Representative  
Connor Dolan at  
(203) 453-5492.



Financial  
Management  
& Trust

at Guilford Savings Bank

[gsb-yourbank.com](http://gsb-yourbank.com)

*Estate Planning & Administration • Investment Management • Trustee & Executor Services*

GUILFORD MAIN • GUILFORD PLAZA • BRANFORD • NORTH BRANFORD • MADISON • NORTH MADISON • OLD SAYBROOK

Select securities offered through INFLEX INVESTMENTS, INC. Member FINRA/SIPC. Inflex and the Bank are not affiliated.  
Other services are provided by the Bank.

NOT A DEPOSIT • NOT FDIC-INSURED • NOT INSURED BY ANY FEDERAL GOVERNMENT AGENCY • NOT GUARANTEED BY THE BANK  
MAY GO DOWN IN VALUE • SUBJECT TO INVESTMENT RISK • SEEK LEGAL ADVICE REGARDING LEGAL OR TAX MATTERS FROM A QUALIFIED ATTORNEY